

Specifications:

- ➔ Metal construction for durability and reliability
- ➔ Pressure balancing volume control with 2-way, two handle diverting
- ➔ Max-temperature limit stop for added safety
- ➔ Integral stop check valves for easy maintenance
- ➔ ADA compliant with Alternate Handle below
- ➔ Requires the fluid F1012B or F1022B pressure balancing valve, (sold separately and available with shut off in solder, PEX and PEX-W.)

Components:

F1001TMB	Sleeve Tube and Cap
FP6028341MB	Wisdom Handle
FP801013MB	Diverter Sleeve
FP605652MB	Diverter Handle
FP6001142MB-2PB	Round Cover Plate
FP40130MB	3-Function Hand Shower*
FA802MB	Slide Bar with Integral Outlet
FP6001007MB	60" Shower Hose*
FP6057034MB	Pipe Tub Spout

Wisdom Tub & Hand Shower Trim Kit with FA802 Slide Bar


F282074TMB




Features:

 Requires 2-way diverting F1012B or F1022B valve

 Integral Stops

 Bubble Level

 Speed Connect

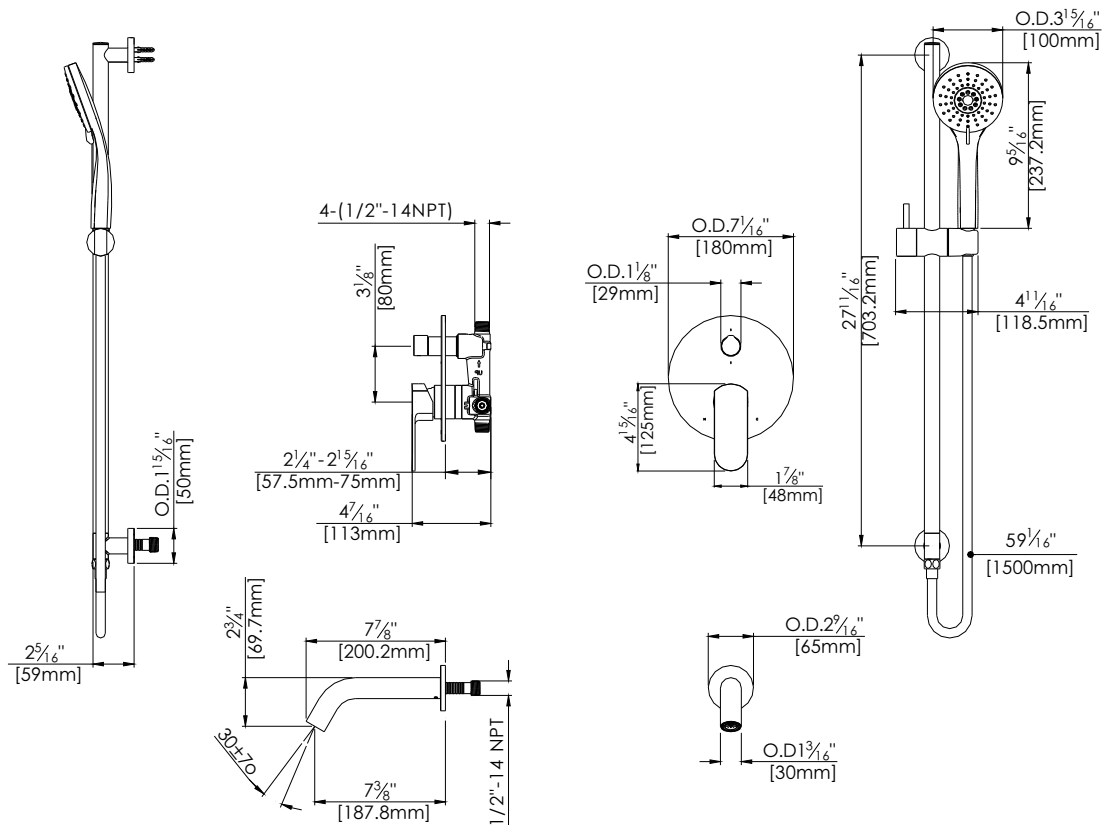
Matte Black (MB)

Kit with Alternate Handle: **F282074TMB-AR**



Technical Drawing

F282074TMB



Warranty:

Limited Lifetime Faucet Warranty against material and manufacturing defects for residential use.

2 Year Limited Warranty on all industrial, commercial and business applications.

Codes and Standards:

ANSI/ASME A112.18.1

CSA B125.1

IAPMO / cUPC Listed

ADA Compliant (with ADA handle)

Flow Rate:

Showerhead 1.8 gpm @ 60 psig

Tub Spout 4.5 gpm @ 60 psig

Low Flow Alternative: Hand Shower @ 1.5 gpm: **F282074TMB-15**