

Tight Radius Undermount Kitchen Sink

Specifications

- Undermount, single bowl tight radius kitchen sink
- High quality fluid sink is hand crafted from #18 gauge, (1.0 mm) type 304 stainless steel
- Minimum cabinet size: 20" (508 mm)
- Features 3 1/2" (90mm), diameter recessed drain opening.
- Full undercoating and large rubber pads for noise reduction and condensation elimination.
- Exposed surfaces are polished to a satin finish
- Cut-out template and mounting hardware are included.
- Stainless steel basket strainer is available and sold separately
- The sink is stack packed, (nested) in bulk

Overall dimensions:

16" (406.4 mm) x 14" (355.6mm) x 7" (178 mm)

Codes and Standards

- ANSI/ASME A112.19.3
- CSA B45 Series-02
- IAPMO / cUPC Listed

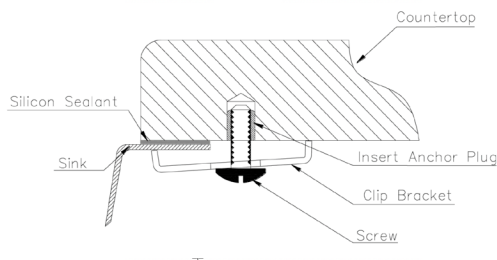


Warranty

Limited Lifetime Sink Warranty against material and manufacturing defects for residential use.

1 Year Limited Warranty on all industrial, commercial and business applications.

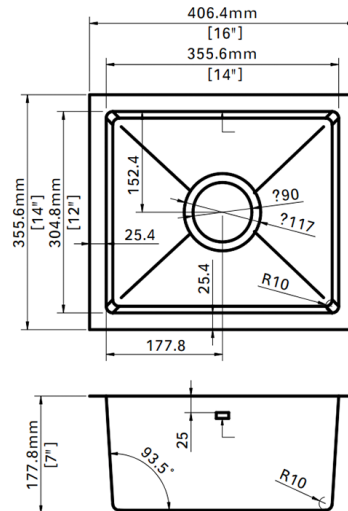
Installation Details



Optional Accesories

Stainless steel basket strainer is available and sold separately.

FSN-USR1614



Finish Available: Stainless Steel

Important Note:

Cut-out template is included in the carton box. Fabricator must check it for accuracy. We are not responsible for incorrect cutting.