

## Specifications:

- ➔ Metal construction for durability and reliability
- ➔ Pressure balancing volume control with 3-way, two handle diverting
- ➔ Maximum temperature limit stop for added safety
- ➔ Integral stop check valves for easy maintenance
- ➔ Requires the fluid F1003B or F1023B pressure balancing valve, (sold separately and available with shut off or \*\*sharing in solder, PEX and PEX-W, F1960 Expansion PEX)

## Components:

F1001T .....	Cartridge Sleeve
FP6019041 .....	Cartridge Handle
FP801013 .....	Diverter Sleeve
FP605652 .....	Diverter Handle
FP6001143-3PB .....	Cover Plate
FP6002150 .....	8" Round Rain Showerhead
FP40120 .....	3-Function Hand Shower
FA802 .....	Slide Bar With Integral Outlet
FP6001006 .....	60" Shower Hose
FP6019034 .....	Yaletown Tub Spout

\*\*sharing available where allowed by code


Kit with Alternate ADA Diverter Handle: **F193024T-ABS-AS**



## Features:

 Requires 3-way diverting F1003B or F1023B valve

 Integral Stops  Bubble Level

 Speed Connect

## Yaletown Tub, Rain Shower & Hand Shower on Slide Bar Trim Kit

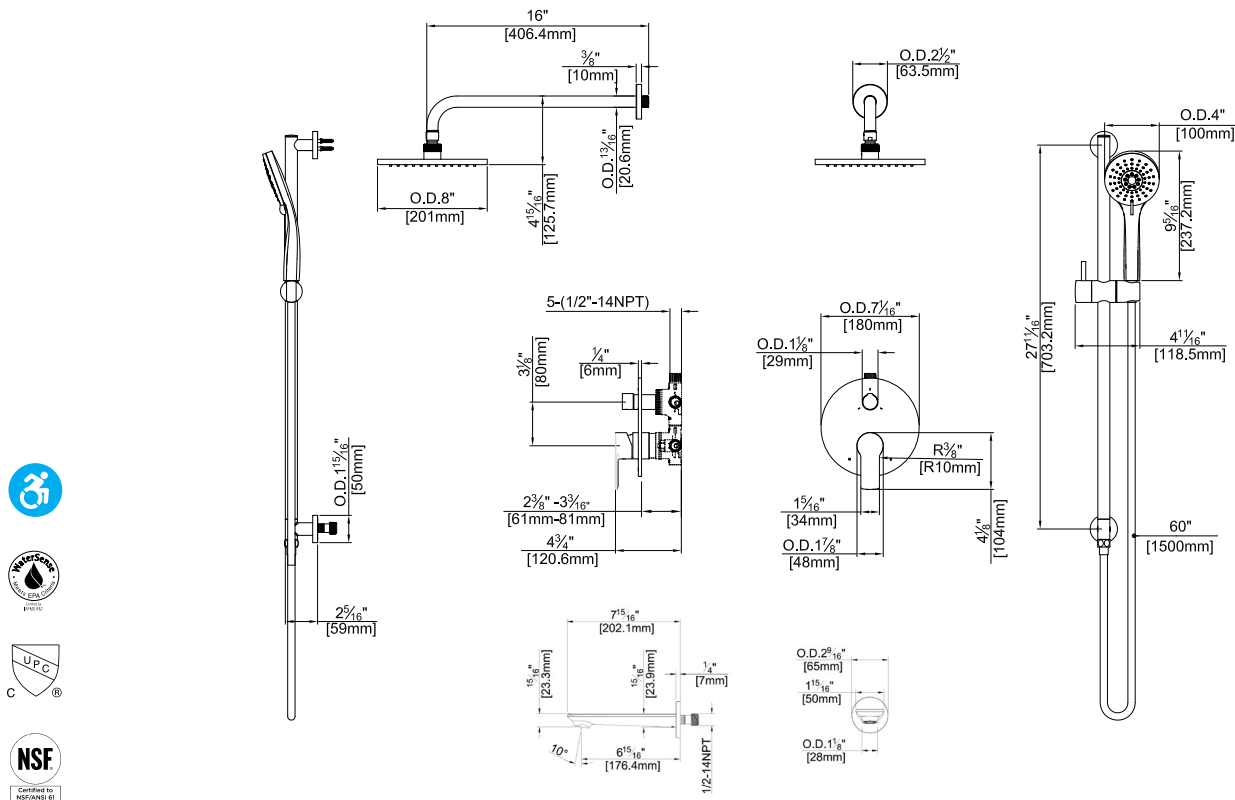
F193024T-ABS



Polished Chrome (CP) and Brushed Nickel (BN)

## Technical Drawing

## F193024T-ABS



**Codes and Standards:** ANSI/ASME A112.18.1, CSA B125.1, IAPMO/cUPC Listed, EPA Watersense Listed, ADA Compliant

### Warranty:

Limited Lifetime Faucet Warranty against material and manufacturing defects for residential use.

2 Year Limited Warranty on all industrial, commercial and business applications.

### Kit Variations:

Kit with ADA diverter handle:

**F193024T-ABS-AR**

Kit with square style cover plate & diverter handle: **F193024T-ABS-S**

### Flow Rate:

Showerhead 1.8 gpm @ 60 psig

Hand Shower 1.8 gpm @ 60 psig

Tub Spout 4.5 gpm @ 60 psig

Low Flow Alternative: Hand Shower @ 1.5 gpm: **F193024T-ABS-15**