

Specifications:

- ➔ Metal construction for durability and reliability
- ➔ Pressure balancing volume control
- ➔ Max-temperature limit stop for added safety
- ➔ Integral stop check valves for easy maintenance
- ➔ Requires the fluid F1001B or F1021B pressure balancing valve, (sold separately and available in solder, PEX and PEX-W.)

Components:

F1001TMB	Sleeve Tube and Cap
FP6028341MB	Wisdom Handle
FP6001035MB-1PB.....	Round Cover Plate
FP6098034LMB	7.5" Curved Diverting Tub Spout
FP6016008MB	8" Shower Arm
FP10120MB	4" Round Showerhead

Wisdom Curved Diverting Tub Spout & 4" Showerhead Trim Kit

F281045TMB



Features:

 Requires non-diverting F1001B or F1021B valve

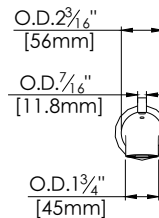
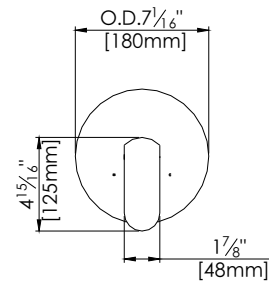
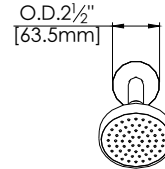
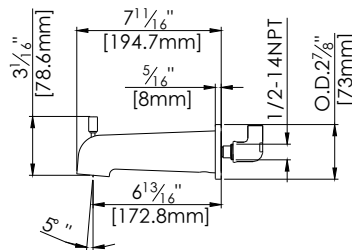
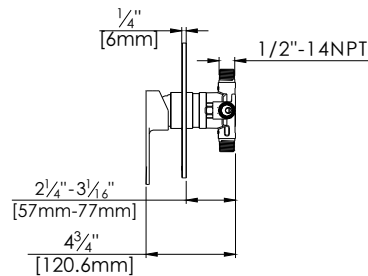
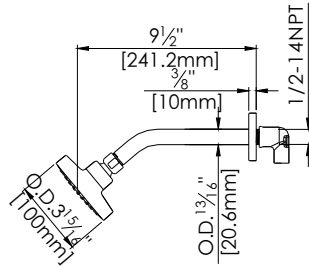
 Integral Stops  Bubble Level

 Slip Fit Connection

Matte Black (MB)

Technical Drawing

F281045TMB



Warranty:

Limited Lifetime Faucet Warranty
against material and manufacturing
defects for residential use.

2 Year Limited Warranty on all industrial,
commercial and business applications.

Codes and Standards:

ANSI/ASME A112.18.1

CSA B125.1

IAPMO / cUPC Listed

Flow Rate:

Showerhead 1.8 gpm @ 60 psig

Tub Spout 4.5 gpm @ 60 psig

Low Flow Alternative: Showerhead
@ 1.5 gpm: **F281045TMB-15**