

Specifications:

- Metal construction for durability and reliability
- Pressure balancing volume control
- Max-temperature limit stop for added safety
- Integral stop check valves for easy maintenance
- Requires the fluid F1001B or F1021B pressure balancing valve, (sold separately and available in solder, PEX and PEX-W.)

Components:


F1001TMB Sleeve Tube and Cap
 FP6028341MB Wisdom Handle
 FP6001035MB-1PB..... Round Cover Plate
 FP10120MB 4" Showerhead
 FP6016008MB 8" Shower Arm

Wisdom 4" Round Shower Only Trim Kit


F281077TMB



Features:

 Requires non-diverting F1001B or F1021B valve

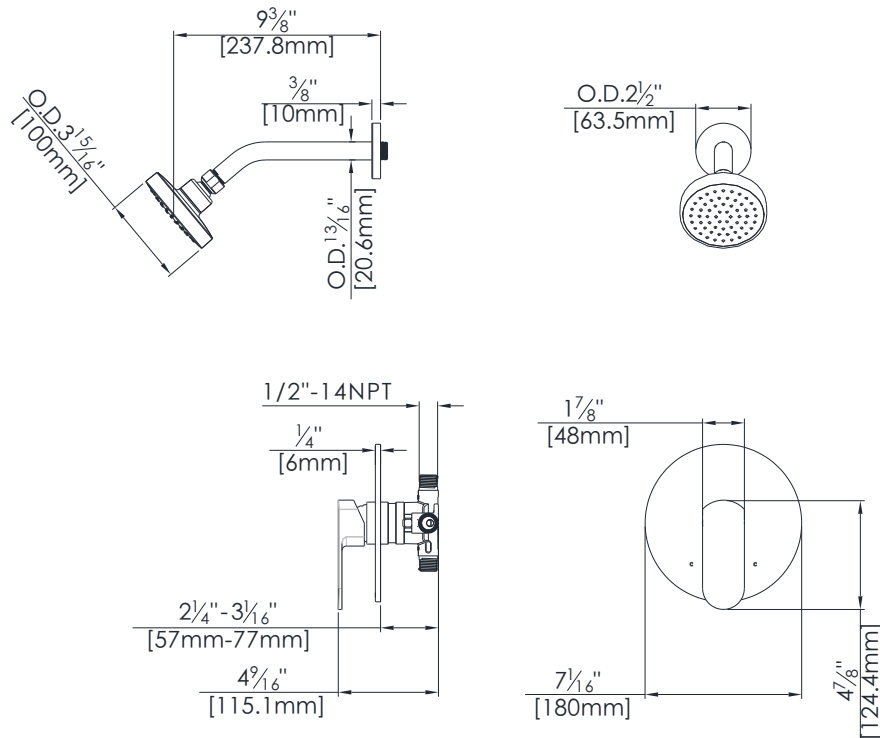
 Integral Stops

 Bubble Level

Matte Black (MB)

Technical Drawing

F281077TMB



Warranty:

Limited Lifetime Faucet Warranty against material and manufacturing defects for residential use.
2 Year Limited Warranty on all industrial, commercial and business applications.

Codes and Standards:

ANSI/ASME A112.18.1
CSA B125.1
IAPMO / cUPC Listed
ADA Compliant

Flow Rate:

Showerhead 1.8 gpm @ 60 psig

Low Flow Alternative: Showerhead @ 1.5 gpm: **F281077TMB-15**