

Specifications:

- ➔ Metal construction for durability and reliability
- ➔ Pressure balancing volume control with 2-way, two handle diverting
- ➔ Maximum temperature limit stop for added safety
- ➔ Integral stop check valves for easy maintenance
- ➔ Requires the fluid F1012B or F1022B pressure balancing valve, (sold separately and available with shut off or **sharing in solder, PEX and PEX-W, F1960 Expansion PEX.)

Components:

F1001T	Cartridge Sleeve
FP6019041	Yaletown Handle
FP801013.....	Diverter Sleeve
FP605652.....	Diverter Handle
FP6001142-2PB.....	Round Cover Plate
FP605652.....	Diverter Handle
FP6006008	16" Shower Arm
FP6002150	8" Round Rain Showerhead
FP40120.....	3-Function Hand Shower*
FA802	Slide Bar with Integral Outlet
FP6001006	60" Shower Hose*

**sharing available where allowed by code


Kit with Alternate ADA Diverter Handle: **F192025T-AR**



Features:

 Requires 2-way diverting F1012B or F1022B valve

 Integral Stops  Bubble Level

 Speed Connect

Yaletown 4" Showerhead & Hand Shower on Slide Bar Trim Kit

F192025T-ABS

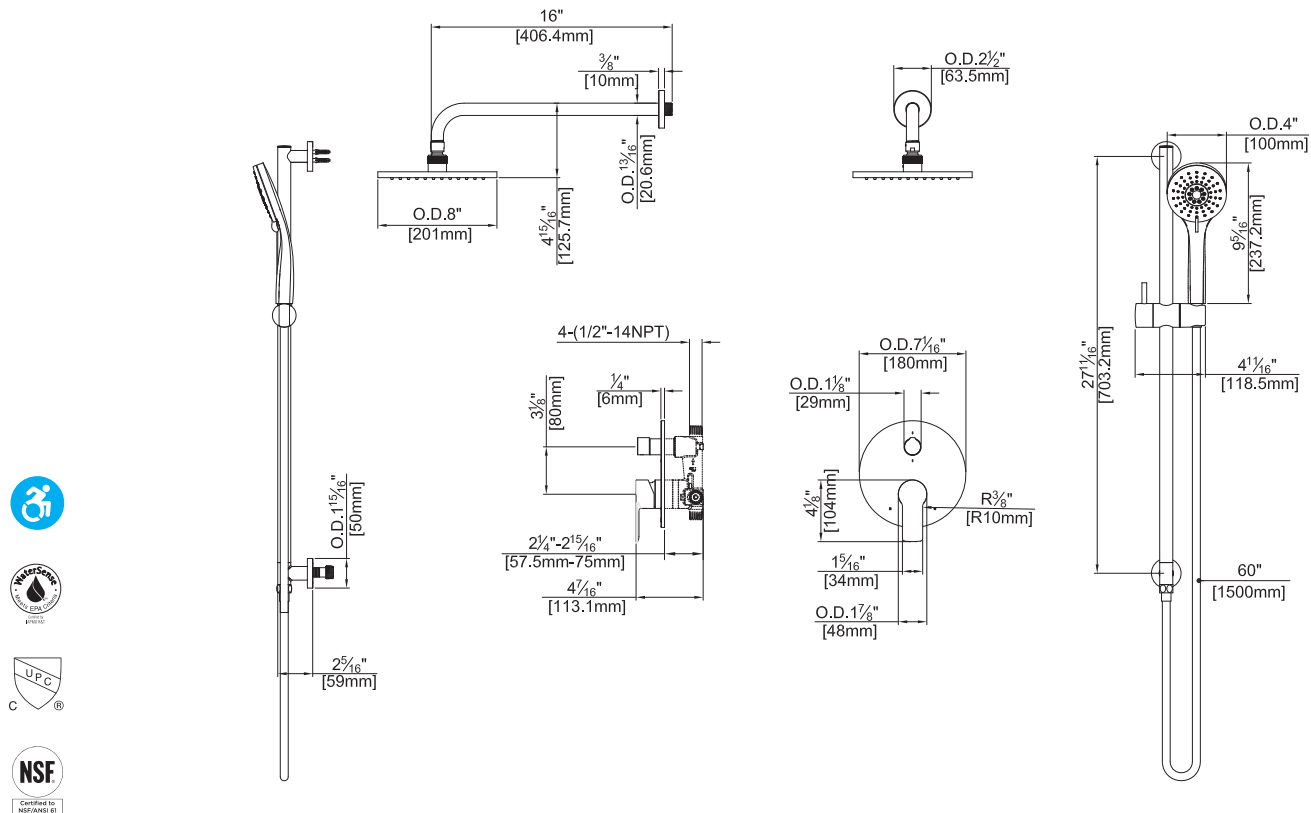


* Matte Black: FP6001007MB Hose, FP40130MB 3-Function Hand Shower

Polished Chrome (CP), Brushed Nickel (BN) and * Matte Black (MB)

Technical Drawing

F192025T



Codes and Standards:

ANSI/ASME A112.18.1, CSA B125.1, IAPMO/cUPC Listed, EPA Watersense Listed (excluding MB Version), ADA Compliant

Warranty:

Limited Lifetime Faucet Warranty against material and manufacturing defects for residential use.

2 Year Limited Warranty on all industrial, commercial and business applications.

Kit Variations:

Kit with ADA diverter handle:

F192025T-AR

Kit with square style cover plate & diverter handle: **F192025T-S**

Flow Rate:

Showerhead 1.8 gpm @ 60 psig

Hand Shower 1.8 gpm @ 60 psig

Low Flow Alternative: Hand Shower @ 1.5 gpm: **F192025T-15**