

Sydney Smart II Easy Height Elongated Top Button Toilet

302100W + 305102W

Specifications

- Vitreous China Dual Flush High Efficiency Toilet (HET)
- Elongated washdown bowl with box flushing rim.
- Designed to provide a seat height of 17 1/2" (445mm) measured to the top of the toilet seat
- The tank incorporates a high performance barrel type outlet valve that has been specially developed with the Easy Height Elongated bowl to ensure optimal reliable flushing performance
- The toilet is suitable for multi-purpose applications, including those where water conservation is important.
- A 326611W soft close detachable seat is included
- Tank: **810788** Bowl: **829109**
- Bowl Weight: 57.2 lbs (26 kg) Tank weight: 40 lbs (18.2 kg)

Outlet:

Floor mounted outlet connector for 12" (305mm) elongated rough-in outlet connection.

Tank:

The tank has a free lifting lid and is suitable for domestic and light commercial applications.

Water Control Valve:

Standard Bottom Entry Tank – available as left hand inlet and incorporates a super quiet water control assembly. Internal overflow only.

Fixing:

The tank is fixed directly to the closet bowl with a robust base fixing system without the need for wall fixing.

Features:



Dual Flush



Two Piece



Smart Glazed Bowl



Soft Closing Seat

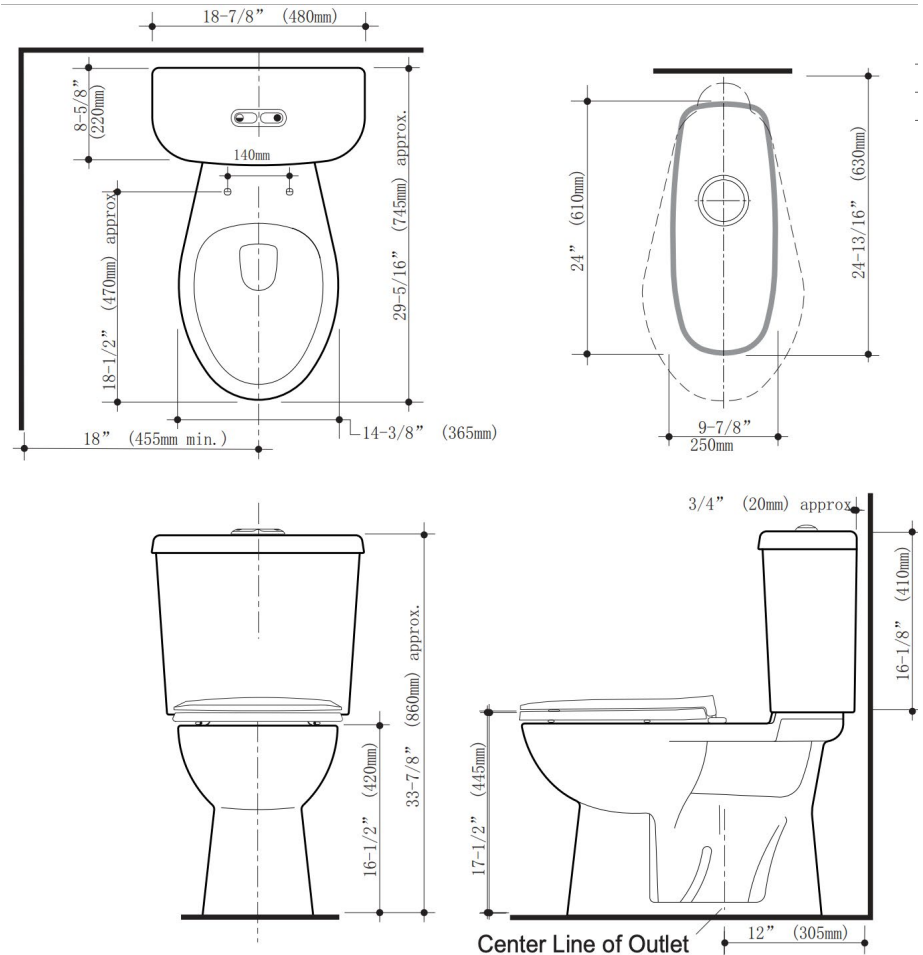
Flush Volume: 1.28/0.8 gpf (4.8/3 lpf)

Technical Drawing & Certifications

302100W + 305102W

All dimensions are in inches and millimeters and are subject to normal manufacturing variations. Caroma pursues a policy of continuing improvement in design and performance of its products. The right is therefore reserved to vary specifications without notice.

Closet bowl fixing: The closet bowl should be sealed with an approved silicon caulking.



Watersense Certified



Uniform Plumbing Code Certified



MAP Premium Certified



High Efficiency Toilet

Warranty:

Effective for sales on or after August 12, 2025

Sustainable Solutions warrants its Caroma® brand toilets to be free from defects in materials and workmanship under normal residential or commercial use, according to the following terms:

- ➔ Vitreous china components: 5-Year Limited Warranty (60 months)
- ➔ Mechanical components (e.g., tank internals, handles, plastic parts): 3-Year Limited Warranty (36 months)
- ➔ Toilet seats included with purchase: 2-Year Limited Warranty (24 months)

This limited warranty applies only to the original purchaser and installation of these products. In the event of a limited warranty claim, proof of purchase from an authorized reseller will be required. For complete warranty details, including conditions and exclusions, please visit sustainablesolutions.com.