

Specifications:

- ➔ Metal construction for durability and reliability
- ➔ Pressure balancing volume control with 2-way, two handle diverting
- ➔ Maximum temperature limit stop for added safety
- ➔ Integral stop check valves for easy maintenance
- ➔ Valve and trim packages are sold separately
- ➔ Requires the fluid F1012B or F1022B pressure balancing valve, (sold separately and available in solder, PEX and PEX-W, F1960 Expansion PEX)





Components:

F1001T	Cartridge Sleeve
FP6023041	Vancouver Handle
FP801013	Diverter Sleeve
FP605752	Diverter Handle
FP6001143-2PB	Square Cover Plate
FP40120	3 Function Hand Shower
FA803	Slide Bar with Integral Outlet
FP6001006	60" Shower Hose
FP6057034	Square Tub Spout

Kit with Alternate ADA Diverter Handle: **F152074T-AS**



Features:

-  Requires 2-Way diverting F1012B or F1022B valve
-  Bubble Level
-  Speed Connect
-  Integral Stops

Vancouver Tub & 3-function Hand Shower on Slide Bar Trim Kit

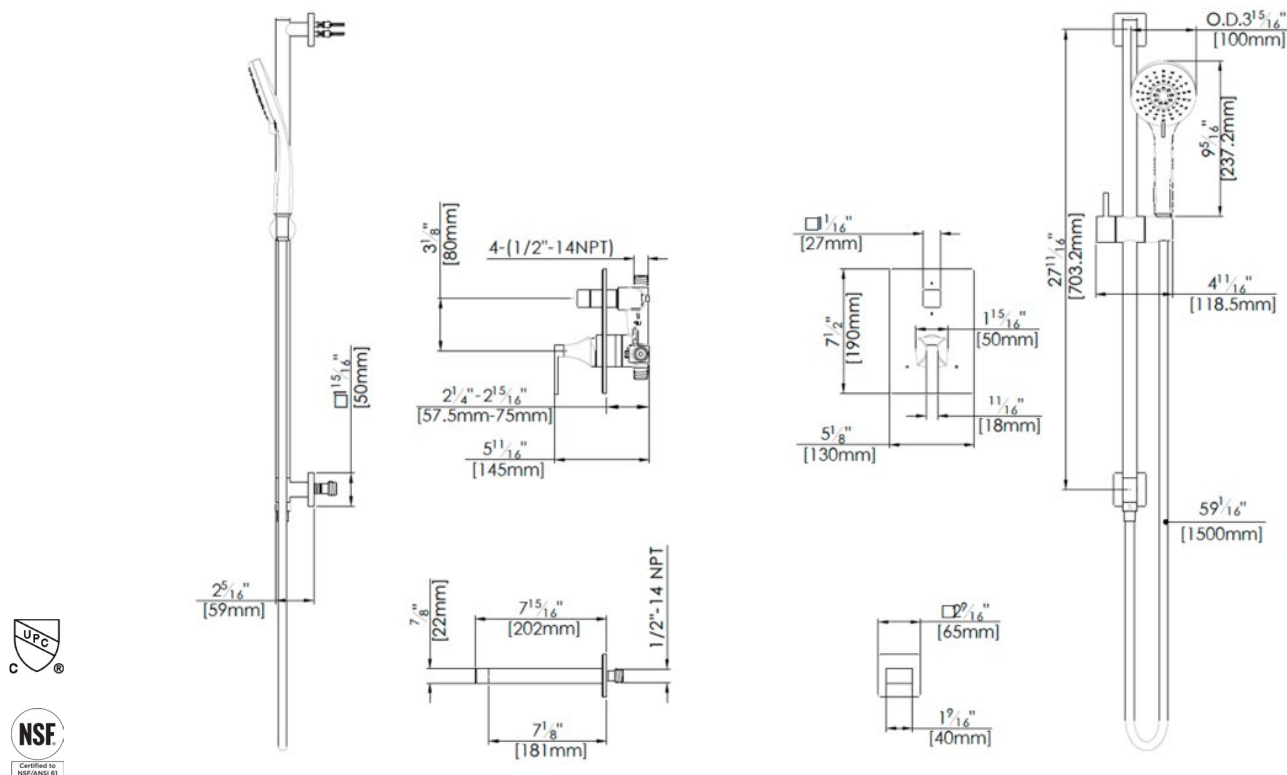
F152074T



Polished Chrome (CP) & Brushed Nickel (BN)

Technical Drawing

F152074T



Codes and Standards: ANSI/ASME A112.18.1, CSA B125.1, IAPMO/cUPC Listed

Warranty:

Limited Lifetime Faucet Warranty against material and manufacturing defects for residential use.

2 Year Limited Warranty on all industrial, commercial and business applications.

Kit Variations:

Kit with ADA diverter handle: [F152074T-AS](#)

Kit with square style cover plate & diverter handle: [F152074T-R](#)

Flow Rate:

Hand Shower 1.8 gpm @ 60 psig
Tub Spout 4.5 gpm @ 60 psig

Low Flow Alternative: Hand Shower @ 1.5 gpm: [F151019T-15](#)