

## Specifications:

- ➔ Metal construction for durability and reliability
- ➔ Pressure balancing volume control with 2-way, two handle diverting
- ➔ Maximum temperature limit stop for added safety
- ➔ Integral stop check valves for easy maintenance
- ➔ ADA compliant when alternate handle below is selected
- ➔ Requires the fluid F1012B or F1022B pressure balancing valve, (sold separately and available in Solder, PEX and PEX-W.)

## Components:

F1001TMB .....	Cartridge Sleeve
FP6024041MB .....	Blade Handle
FP801013MB .....	Diverter Sleeve
FP605652MB .....	Diverter Handle
FP6001142MB-2PB .....	Round Cover Plate
FP40130MB .....	3 Function Hand Shower
FA802MB .....	Slide Bar with Integral Outlet
FP6001007MB .....	60" Shower Hose
FP6057034MB .....	Pipe Tub Spout

Kit with Alternate Handle: **F242201TMB-AR**



## Features:



Requires non-diverting F1012B or F1022B valve



Integral Stops



Bubble Level



ADA



Speed Connect

## Citi Tub & Hand Shower Trim Kit with FA802 Slide Bar

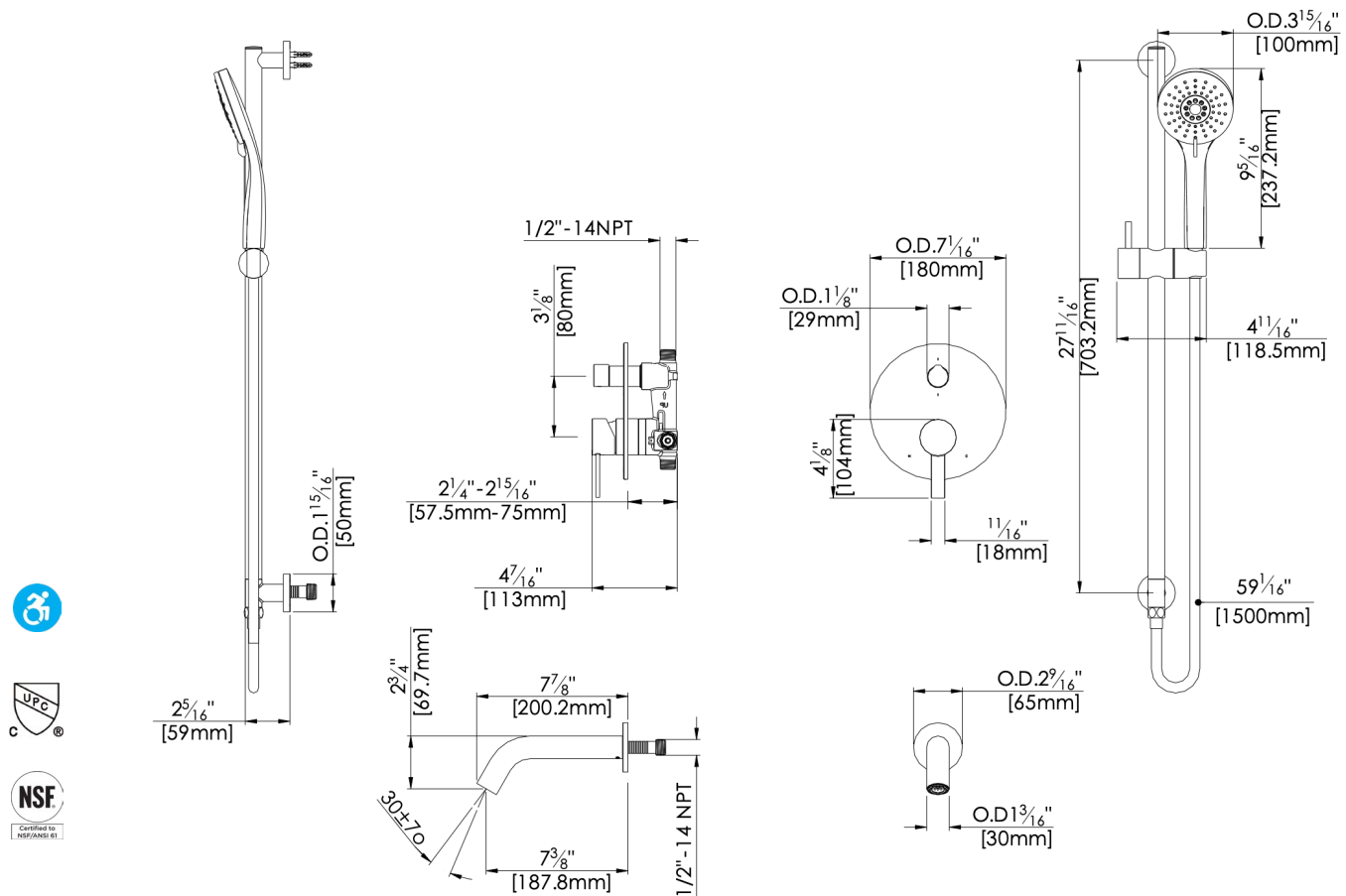
F242074TMB



Matte Black (MB)

## Technical Drawing

F242074TMB



**Codes and Standards:** ANSI/ASME A112.18.1, CSA B125.1, IAPMO / cUPC Listed

### Warranty:

Limited Lifetime Faucet Warranty against material and manufacturing defects for residential use.

2 Year Limited Warranty on all industrial, commercial and business applications.

### Kit Variations:

Kit with ADA diverter handle:

**F242074TMB-AR**

Kit with square style cover plate & diverter handle: **F242074TMB-S**

### Flow Rate:

Shower Head 1.8 gpm @ 60 psig

Tub Spout 4.5 gpm @ 60 psig

Low Flow Alternative: Shower Head @ 1.5 gpm: **F242074TMB-15**