

## Specifications:

- Metal construction
- Pressure balancing with volume control
- Maximum temperature limit stop for added safety
- Integral stop check valves for easy maintenance
- Requires the fluid F1001B or F1021B pressure balancing valve, (sold separately and available in solder, PEX and PEX-W.)

## Components:

F1001TMB .....	Sleeve tube and cap
FP6016041MB .....	Quad Handle
FP6001033MB-1PB.....	Square Cover Plate
FP6027008MB .....	8" Shower Arm
FP6000150MB .....	6" Square Shower Head

## Quad 6" Square Rain Shower Only Trim Kit

F161203TMB



## Features:

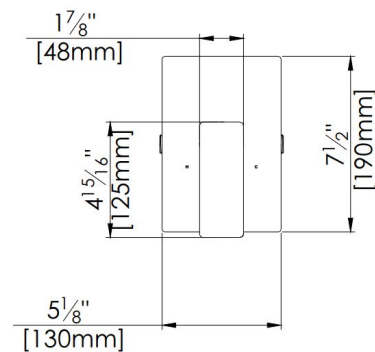
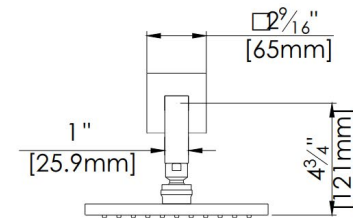
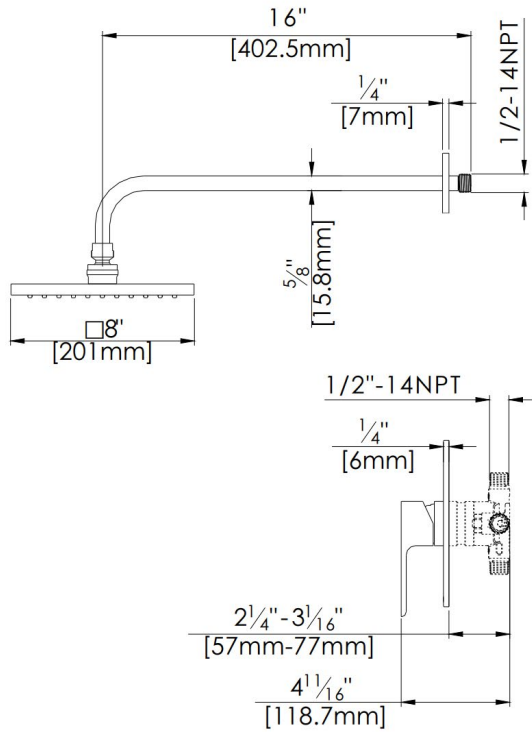
 Requires non-diverting F1001B or F1021B valve

 Integral Stops  Bubble Level

Matte Black (MB)

## Technical Drawing

## F161203TMBTMB



## Warranty:

Limited Lifetime Faucet Warranty  
against material and manufacturing  
defects for residential use.  
2 Year Limited Warranty on all industrial,  
commercial and business applications.

## Codes and Standards:

ANSI/ASME A112.18.1  
CSA B125.1  
IAPMO / cUPC Listed  
ADA Compliant

## Flow Rate:

Showerhead 1.8 gpm @ 60 psig

Low Flow Alternative: Showerhead  
@ 1.5 gpm: **F161037TMB-15**