

**Specifications:**

- ➔ Metal construction
- ➔ Pressure balancing with volume control
- ➔ Maximum temperature limit stop for added safety
- ➔ Integral stop check valves for easy maintenance
- ➔ Requires the fluid F1001B or F1021B pressure balancing valve, (sold separately and available in solder, PEX and PEX-W.)

**Components:**

F1001TMB ..... Sleeve tube and cap  
FP6016041MB ..... Quad Handle  
FP6001033MB-1PB ..... Square Cover Plate  
FP6027008MB ..... 8" Shower Arm  
FP6000150MB ..... 6" Square Shower Head

**Quad 6" Square Rain Shower  
Only Trim Kit**

F161037TMB

**Features:**

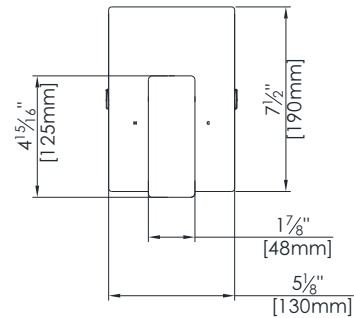
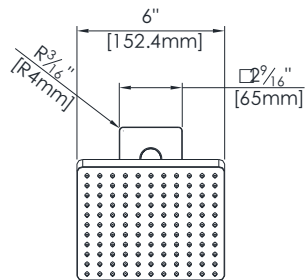
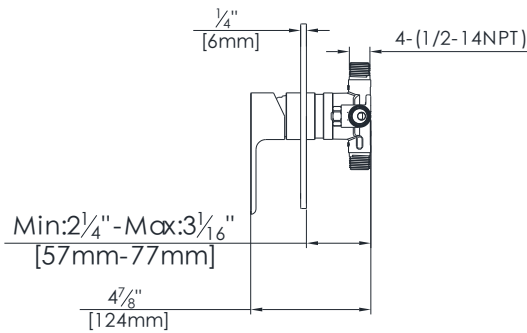
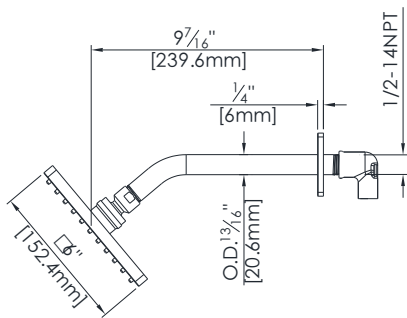
 Requires non-diverting F1001B or F1021B valve

 Integral Stops  Bubble Level

Matte Black (MB)

## Technical Drawing

F161037TMB



## Warranty:

Limited Lifetime Faucet Warranty against material and manufacturing defects for residential use.  
2 Year Limited Warranty on all industrial, commercial and business applications.

## Codes and Standards:

ANSI/ASME A112.18.1  
CSA B125.1  
IAPMO / cUPC Listed  
ADA Compliant

## Flow Rate:

Showerhead 1.8 gpm @ 60 psig

Low Flow Alternative: Showerhead @ 1.5 gpm: **F161037TMB-15**