

**Specifications:**

- ➔ Metal construction for durability and reliability
- ➔ Pressure balancing single handle diverting and volume control
- ➔ Max-temperature limit stop for added safety
- ➔ Integral stop check valves for easy maintenance
- ➔ Requires the fluid F1002B or F1042B pressure balancing valve, (sold separately and available in solder, PEX and PEX-W.)

**Components:**

F1001TMB .....	Sleeve Tube and Cap
FP6028341MB .....	Wisdom Handle
FP6001035MB-2PS .....	Round Cover Plate
FP6098034MB .....	7.5" Curved Tub Spout
FP6016008MB .....	8" Shower Arm
FP20100MB .....	6" Round Showerhead


**Wisdom Tub Spout & 5 Function Showerhead Trim Kit**

F284110TMB

**Features:**

 Requires 2-way diverting F1002B or F1042B valve

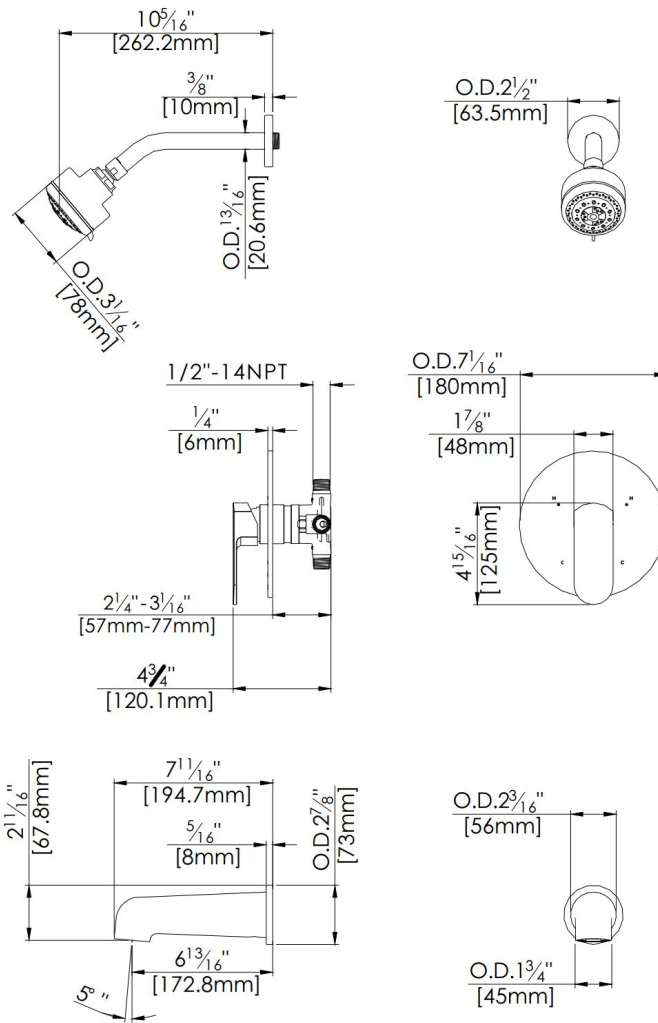
 Integral Stops  Bubble Level

 Slip Fit Connection

Matte Black (MB)

## Technical Drawing

F284110TMB



## Warranty:

Limited Lifetime Faucet Warranty  
against material and manufacturing  
defects for residential use.

2 Year Limited Warranty on all industrial,  
commercial and business applications.

## Codes and Standards:

ANSI/ASME A112.18.1

CSA B125.1

IAPMO / cUPC Listed

ADA Compliant

## Flow Rate:

Showerhead 1.8 gpm @ 60 psig

Tub Spout 4.5 gpm @ 60 psig

Low Flow Alternative: Showerhead  
@ 1.5 gpm: **F284110TMB-15**