

Specifications:

- ➔ **Stainless Steel Construction**
- ➔ **Round Hand Shower** is made of metal with silicon, self-cleaning nozzles
- ➔ **Adjustable Slide Bar** allows you to change hand shower height
- ➔ **8" Swivelling Shower Arm** for adjustable positioning
- ➔ **Reversible Hose Elbow** installs left or right
- ➔ **Water Inlet** is located at the top installation post
- ➔ **Built in Check Valve** prevents backflow
- ➔ **Requires the fluid F1001B or F1021B** pressure balancing valve (sold separately and available with shut off, PEX and PEX-W)

Components:

F1001T	Sleeve Tube and Cap
FP6001035-1PB	Round Cover Plate
FP6024041	Blade Handle
FP933002	18" Main Slide Bar (Round Trim)
FP900208-TALL	8" Shower Arm with 6" Riser
FP6001048	Round Hand Shower *
FP6000350	6" Round Shower Head
FP6001006	60" Shower Hose *

Features:



Requires Non-Diverting F1001B or F1021B valve



Integral Stops



Bubble Level



Speed Connect
(Slide Bar)

Citi Switch Shower & Hand Shower Trim Kit

F241014T-18T



*

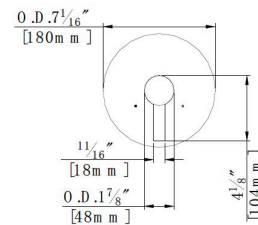
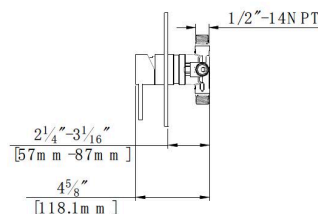
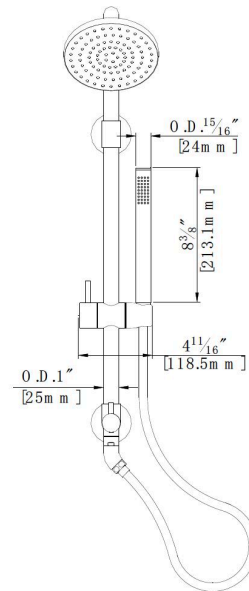
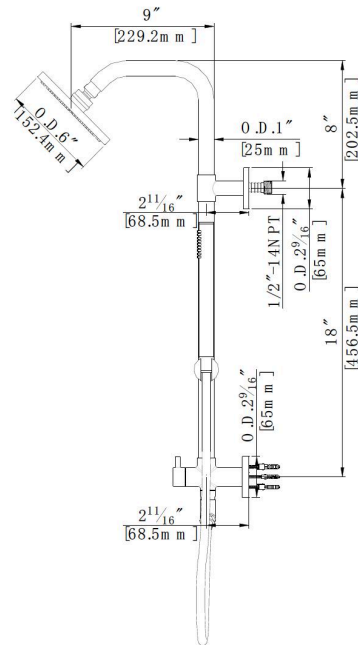
Matte Black Specific Components

FP6001007MB Hose | FP6006048MB Hand Shower

Polished Chrome (CP), Brushed Nickel (BN), and Matte Black (MB)

Technical Drawing

F241014T-18T



Warranty

Limited Lifetime Faucet Warranty against material and manufacturing defects for residential use.

2 Year Limited Warranty on all industrial, commercial and business applications.

Codes and Standards:

ANSI/ASME A112.18.1

CSA B125.1

IAPMO / cUPC Listed

ADA Compliant

Flow Rate:

Showerhead 1.8 gpm @ 60 psig

Hand Shower 1.8 gpm @ 60 psig

Low Flow Alternative: Showerhead and Hand Shower @ 1.5 gpm:

F241014T-18T-15