

## Specifications:

- ➔ **Stainless Steel Construction**
- ➔ **Round Hand Shower** is made of metal with silicon, self-cleaning nozzles
- ➔ **Adjustable Slide Bar** allows you to change hand shower height
- ➔ **8" Swivelling Shower Arm** for adjustable positioning
- ➔ **Reversible Hose Elbow** installs left or right
- ➔ **Water Inlet** is located at the top installation post
- ➔ **Built in Check Valve** prevents backflow
- ➔ **Requires the fluid F1001B or F1021B** pressure balancing valve (sold separately and available with shut off, PEX and PEX-W)

## Components:

F1001T	Sleeve Tube and Cap
FP6001035-1PB	Round Cover Plate
FP6024041	Blade Handle
FP933002	18" Main Slide Bar (Round Trim)
FP900208	8" Shower Arm with 2" Riser
FP6001048	Round Hand Shower *
FP6000350	6" Round Shower Head
FP6001006	60" Shower Hose *

## Features:



Requires Non-Diverting F1001B or F1021B valve



Integral Stops



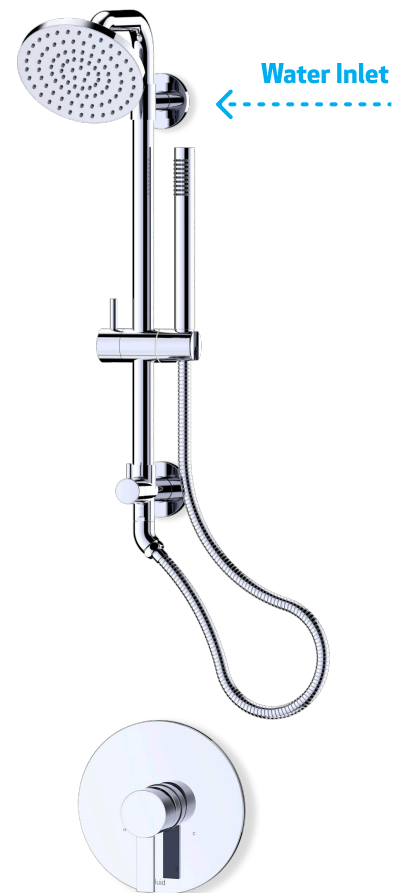
Bubble Level



Speed Connect  
(Slide Bar)

## Citi Switch Shower & Hand Shower Trim Kit

# F241014T-18



\*

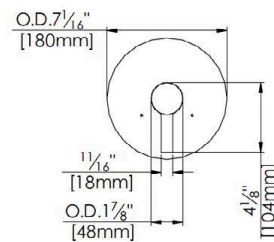
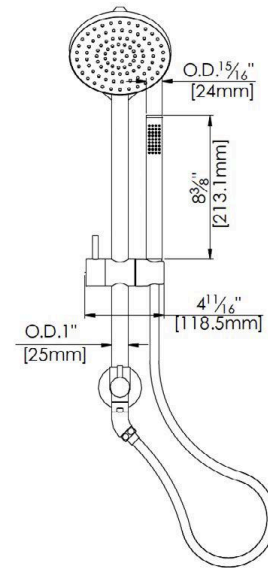
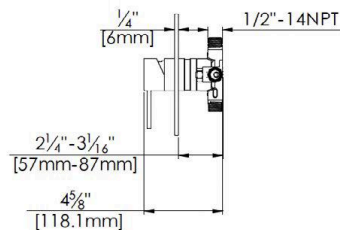
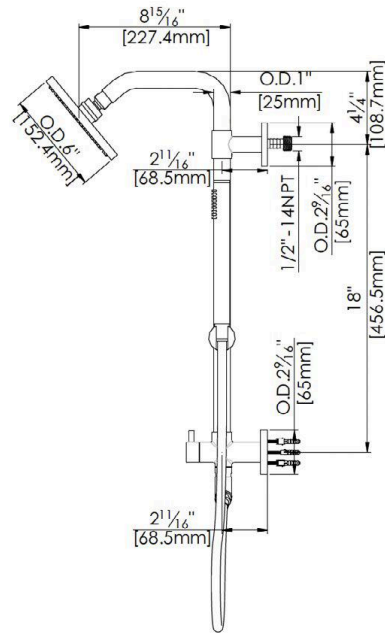
### Matte Black Specific Components

FP6001007MB Hose | FP6006048MB Hand Shower

Polished Chrome (CP), Brushed Nickel (BN), and Matte Black (MB)

## Technical Drawing

F241014T-18



## Warranty

Limited Lifetime Faucet Warranty against material and manufacturing defects for residential use.

2 Year Limited Warranty on all industrial, commercial and business applications.

## Codes and Standards:

ANSI/ASME A112.18.1

CSA B125.1

IAPMO / cUPC Listed

ADA Compliant

## Flow Rate:

Showerhead 1.8 gpm @ 60 psig

Hand Shower 1.8 gpm @ 60 psig

Low Flow Alternative: Showerhead and Hand Shower @ 1.5 gpm:

**F241014T-18-15**