

Specifications:

- Metal construction for durability and reliability
- Pressure balancing volume control
- Features an 8" Rainshower Head
- Maximum temperature limit stop for added safety
- Integral stop check valves for easy maintenance
- Requires the fluid F1001B or F1021B pressure balancing valve, (sold separately and available in solder, PEX and PEX-W.)
- ADA compliant

Components:

F1001TMB	Cartridge Sleeve
FP6024041MB	Blade Handle
FP6001035MB-1PB.....	Cover Plate
FP6002150MB	8" Shower Head
FP6006008MB.....	16" Shower Arm

Citi 8" Round Rain Shower Only Trim Kit

F241097TMB



Features:

 Requires non-diverting F1001B or F1021B valve

 Integral Stops

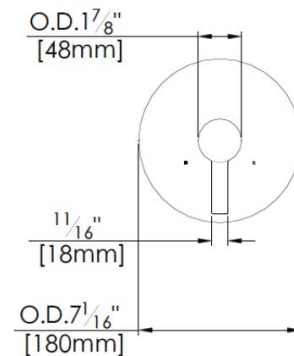
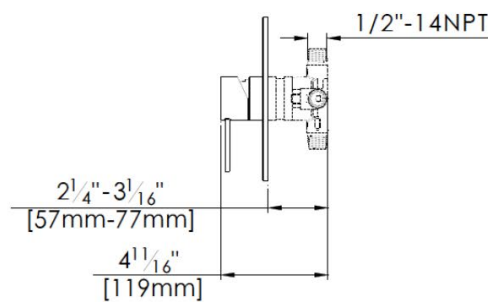
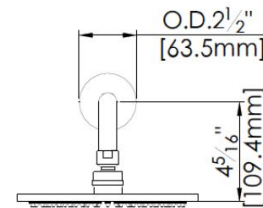
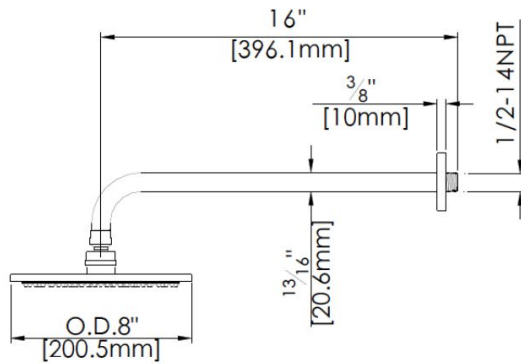
 Bubble Level

 ADA

Matte Black (MB)

Technical Drawing

F241097TMB



Codes and Standards: ANSI/ASME A112.18.1, CSA B125.1, IAPMO / cUPC Listed, EPA Watersense Listed

Warranty:

Limited Lifetime Faucet Warranty against material and manufacturing defects for residential use.

2 Year Limited Warranty on all industrial, commercial and business applications.

Kit Variations:

Kit with square style cover plate & diverter handle: **F241097T-ABS-S**

Flow Rate:

Shower Head 1.8 gpm @ 60 psig