

## Specifications:

- Metal construction
- Pressure balancing volume control
- Max-temperature limit stop for added safety
- Integral stop check valves for easy maintenance
- 4" round shower head and 7.5" diverting tub spout
- Requires the fluid F1001B or F1021B pressure balancing valve, (sold separately and available in older, PEX and PEX-W.)

## Components:

F1001TMB .....	Sleeve Tube and Cap
FP6024041MB .....	Blade Handle
FP6001035MB-1PB.....	Round Cover Plate
FP6098034MBV .....	7.5" Curved Diverting Tub Spout
FP6016008MB .....	8" Shower Arm
FP10120MNB.....	4" Round Shower Head


## Citi Curved Diverting Tub Spout & 4" Shower Trim Kit

F241045TMB



## Features:

 Requires non-diverting F1001B or F1021B valve

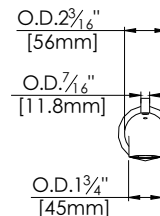
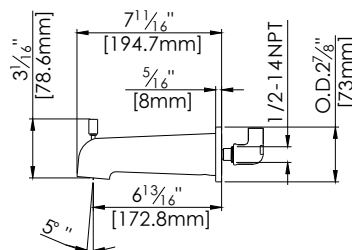
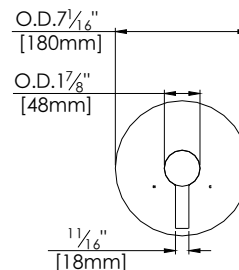
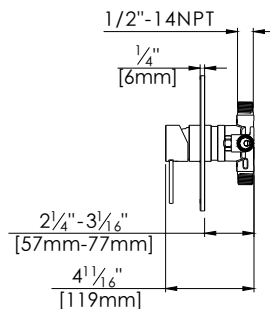
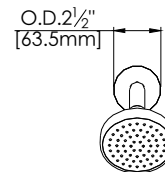
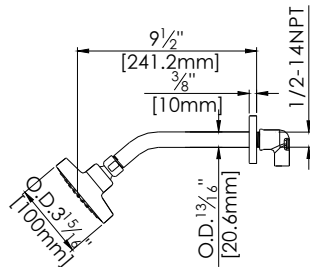
 Integral Stops  Bubble Level

 Slip Fit Connection

Matte Black (MB)

## Technical Drawing

F241045TMB



### Warranty:

Limited Lifetime Faucet Warranty against material and manufacturing defects for residential use.

2 Year Limited Warranty on all industrial, commercial and business applications.

### Codes and Standards:

ANSI/ASME A112.18.1

CSA B125.1

IAPMO / cUPC Listed

### Flow Rate:

Shower Head 1.8 gpm @ 60 psig

Tub Spout 4.5 gpm @ 60 psig

Low Flow Alternative: Shower Head @1.5 gpm: **F241045TMB-15**