

Specifications:

- Metal construction for durability and reliability
- Pressure balancing volume control with 2-way, two handle diverting
- Maximum temperature limit stop for added safety
- Integral stop check valves for easy maintenance
- ADA compliant when alternate handle below is selected
- Requires the fluid F1012B or F1022B pressure balancing valve, (sold separately and available in solder, PEX and PEX-W.)

Components:

F1001T	Sleeve Tube and Cap
FP6024041	Blade Handle
FP801013	Diverter Sleeve Tube
FP605652	Diverter Handle
FP6001142-2PB	Cover Plate
FP6016008	8" Shower Arm
FP6000350	6" Shower Head
FP6057034	Round Tub Spout

Kit with Alternate Handle: **F242002T-AR**



Citi Shower Tub & Shower Head Trim Kit

F242002T



Requires 2-Way diverting F1012B or F1022B valve



Bubble Level



Speed Connect

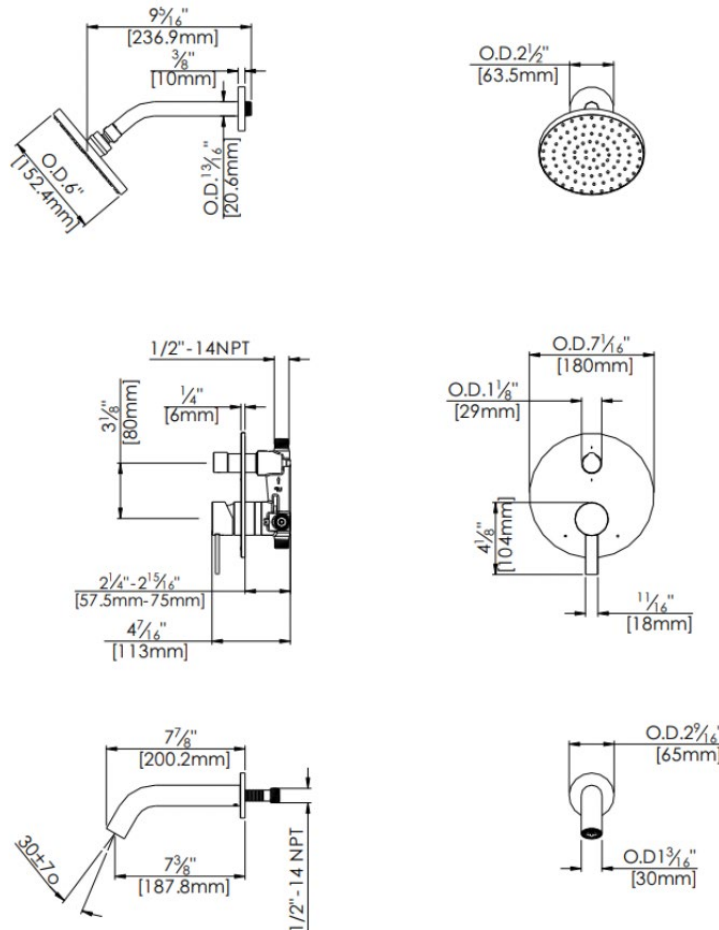


Integral Stops

Polished Chrome (CP), Brushed Nickel (BN) and Matte Black (MB)

Technical Drawing

F242002T



Codes and Standards: ANSI/ASME A112.18.1, CSA B125.1, IAPMO / cUPC Listed

Warranty:

Limited Lifetime Faucet Warranty against material and manufacturing defects for residential use.

2 Year Limited Warranty on all industrial, commercial and business applications.

Kit Variations:

Kit with ADA diverter handle:

F242002T-AR

Kit with square style cover plate & diverter handle: **F242002T-S**

Flow Rate:

Shower Head 1.8 gpm @ 60 psig

Tub Spout 4.5 gpm @ 60 psig

Low Flow Alternative: Shower Head @ 1.5 gpm: **F242002T-15**