

Specifications:

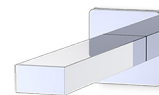
- Metal construction
- Pressure balancing with 2-way single handle diverting and temperature control
- Maximum temperature limit stop for added safety
- Integral stop check valves for easy maintenance
- Requires the fluid F1002B or F1042B pressure balancing valve, (sold separately and available in solder, PEX and PEX-W.)

Components:

F1001T	Sleeve Tube and Cap
FP6016041	Quad / Jovian Handle
FP6001033-2PS	Square Cover Plate
FP6027008	8" Shower Arm
FP6000150	6" Showerhead
FP6056034	Cubed Tub Spout

Jovian Tub & 6" Shower Trim Kit (Single Handle)


F214109T-Q



Features:

 Requires 2-way diverting F1002B or F1042B valve

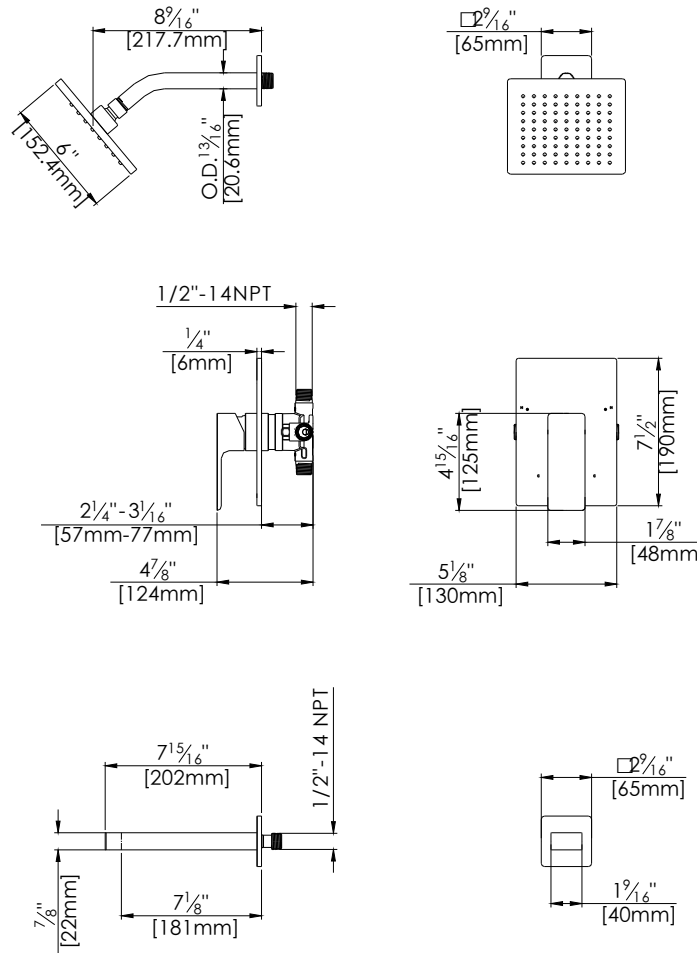
 Integral Stops  Bubble Level

 Speed Connect

Polished Chrome (CP) and Brushed Nickel (BN)

Technical Drawing

F214109T-Q



Warranty:

Limited Lifetime Faucet Warranty against material and manufacturing defects for residential use.

2 Year Limited Warranty on all industrial, commercial and business applications.

Codes and Standards:

ANSI/ASME A112.18.1

CSA B125.1

IAPMO / cUPC Listed

ADA Compliant

Flow Rate:

Showerhead 1.8 gpm @ 60 psig

Tub Spout 4.5 gpm @ 60 psig

Low Flow Alternative: Showerhead @ 1.5 gpm: **F214109T-Q-15**