

## Specifications:

- ➔ Metal construction for durability and reliability
- ➔ Pressure balancing volume control with 3-way, two handle diverting
- ➔ Maximum temperature limit stop for added safety
- ➔ Integral stop check valves for easy maintenance
- ➔ Requires the fluid F1003B or F1023B pressure balancing valve, (sold separately and available with shut off or \*\*sharing in solder, PEX and PEX-W, F1960 Expansion PEX.)

## Components:

F1001T	Cartridge Sleeve
FP6019041	Yaletown Handle
FP801013	Diverter Sleeve
FP605752	Diverter Handle
FP6001143-3PB	Square Cover Plate
FP6018308	3" Ceiling Shower Arm
FP6002150	8" Round Rain Showerhead
FP6016008	8" Shower Arm
FP6000350	6" Showerhead
FP6001006	60" Shower Hose*
FA802	Slide Bar With Integral Outlet
FP40120	3-Function Hand Shower*

\*\*sharing available where allowed by code

Kit with Alternate ADA Diverting Handle: **F193036T-ABS-AS**



## Features:



Requires 3-way diverting F1003B or F1023B valve



Integral Stops



Bubble Level



Speed Connect

## Yaletown Double Showerhead & Hand Shower Trim Kit

F193036T-ABS



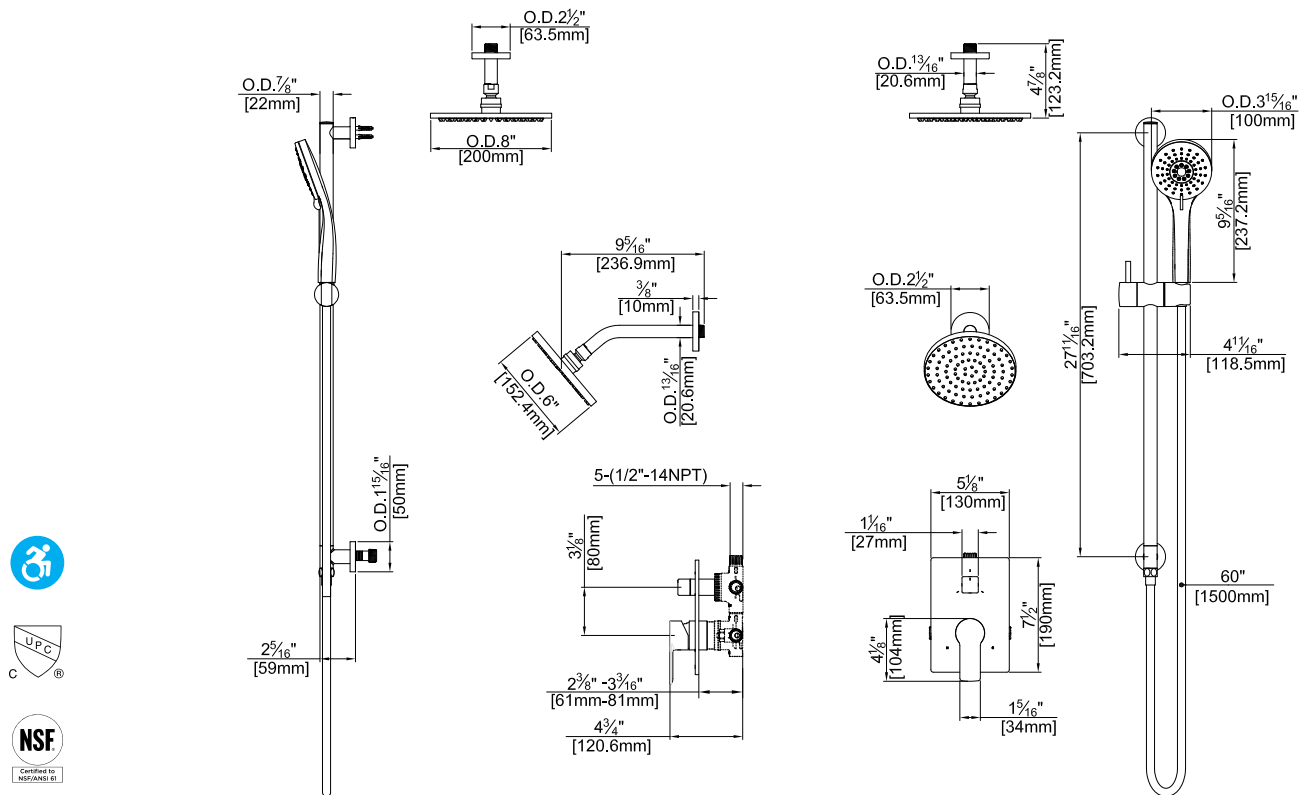
\*

Matte black kits feature: FP6001007MB Shower Hose, FP40130MB Hand Shower

Polished Chrome (CP), Brushed Nickel (BN) and \*Matte Black (MB)

## Technical Drawing

## F193036T-ABS



**Codes and Standards:** ANSI/ASME A112.18.1, CSA B125.1, IAPMO/cUPC Listed, ADA Compliant

### Warranty:

Limited Lifetime Faucet Warranty against material and manufacturing defects for residential use.

2 Year Limited Warranty on all industrial, commercial and business applications.

### Kit Variations:

Kit with ADA diverter handle:

**F193036T-ABS-AS**

Kit with round style cover plate & diverter handle: **F193036T-ABS-R**

### Flow Rate:

Showerheads 1.8 gpm @ 60 psig

Hand Shower 1.8 gpm @ 60 psig

Low Flow Alternative: 6" Showerhead & Hand Shower @ 1.5 gpm: **F193036T-ABS-15**