

Specifications:

- ➔ Metal construction for durability and reliability
- ➔ Pressure balancing volume control with 2-way, two handle diverting
- ➔ Maximum temperature limit stop for added safety
- ➔ Integral stop check valves for easy maintenance
- ➔ Requires the fluid F1012B or F1022B pressure balancing valve, (sold separately and available with shut off or **sharing in solder, PEX and PEX-W, F1960 Expansion PEX.)

Components:

| | |
|---------------------|------------------------|
| F1001T | Cartridge Sleeve |
| FP6019041 | Yaletown Handle |
| FP80101 | Diverter Sleeve |
| FP605652 | Diverter Handle |
| FP6001142-2PB | Cover Plate |
| FP6016008 | 8" Shower Arm |
| FP6000350 | 6" Showerhead |
| FP40120 | 3-Function Hand Shower |
| FA105 | Brass Slide Bar |
| FP6002047 | Wall Outlet |
| FP6001006 | 60" Shower Hose |

**sharing available where allowed by code

Kit with Alternate ADA Diverter Handle: **F192007T-AR**



Features:

Requires 2-way diverting F1012B or F1022B valve

Integral Stops

Bubble Level

Speed Connect

Yaletown 6" Shower & Hand Shower Trim Kit With Slide Bar

F192007T

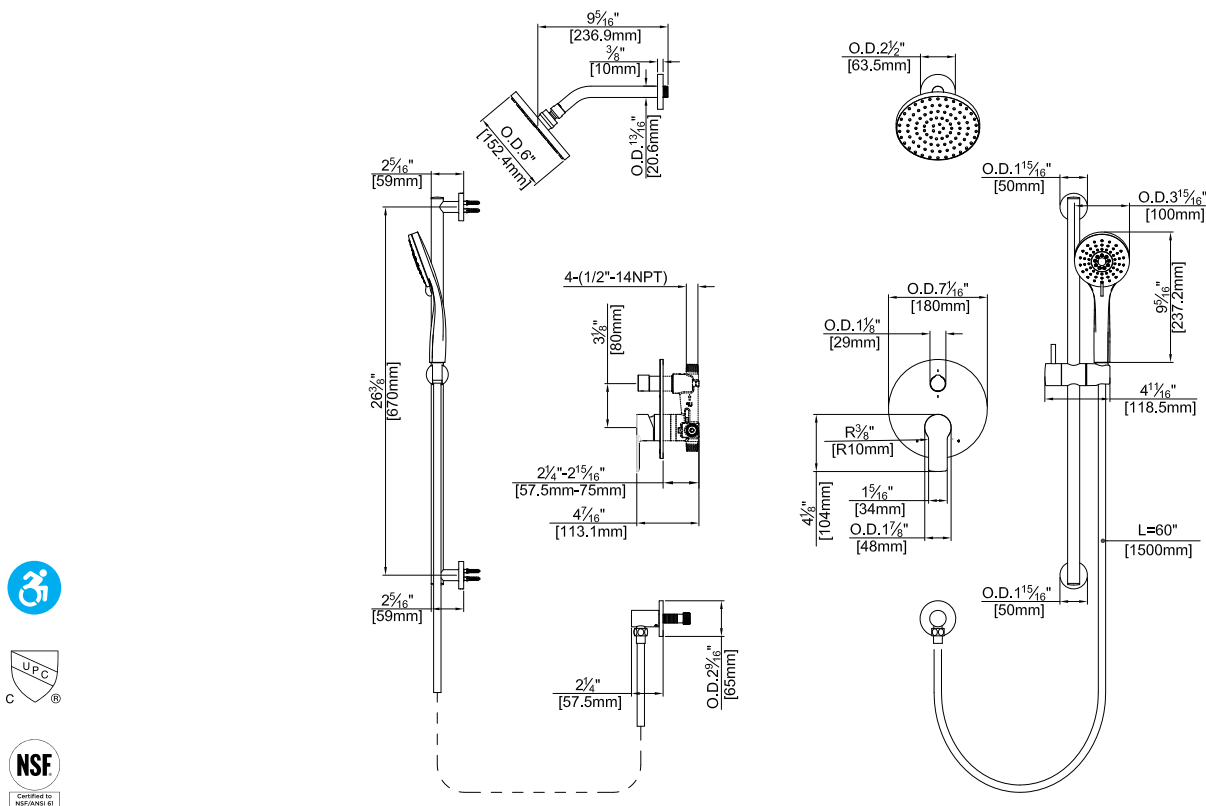


Polished Chrome (CP) and Brushed Nickel (BN)



Technical Drawing

F192007T



Codes and Standards: ANSI/ASME A112.18.1, CSA B125.1, IAPMO/cUPC Listed, ADA Compliant

Warranty:

Limited Lifetime Faucet Warranty
against material and manufacturing
defects for residential use.

2 Year Limited Warranty on all industrial, commercial and business applications.

Kit Variations:

Kit with ADA diverter handle:

F192007T-AR

Kit with square style cover plate & diverter handle: **F192007T-S**

Flow Rate:

Showerhead 1.8 gpm @ 60 psig

Hand Shower 1.8 gpm @ 60 psig

Low Flow Alternative: Shower-head & Hand Shower @ 1.5 gpm:

F192007T-15