

Specifications:

- Metal construction for durability and reliability
- Pressure balancing volume control
- Maximum temperature limit stop for added safety
- Integral stop check valves for easy maintenance
- Requires the fluid F1001B or F1021B pressure balancing valve, (sold separately and available in solder, PEX and PEX-W, F1960 Expansion PEX.)

Components:

F1001T	Cartridge Sleeve
FP6019041	Yaletown Handle
FP6001035-1PB	Cover Plate
FP6002150	8" Round Rain Showerhead
FP6006008	16" Shower Arm

Yaletown 8" Rain Showerhead Only Trim Kit


F191203T-ABS



Features:

 Requires non-diverting F1001B or F1021B valve

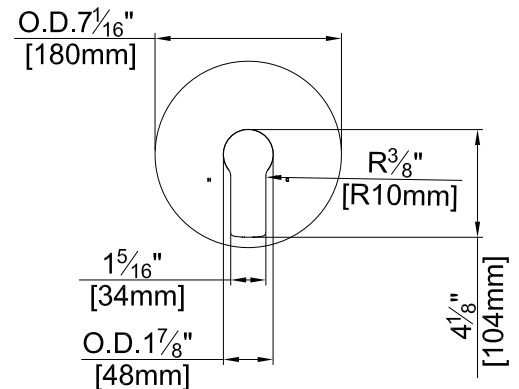
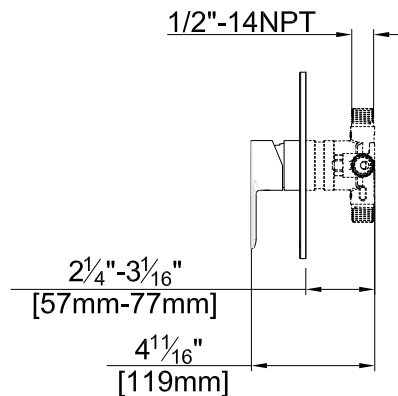
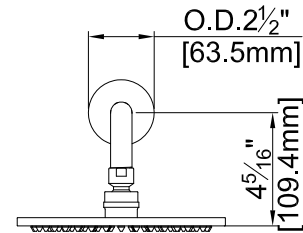
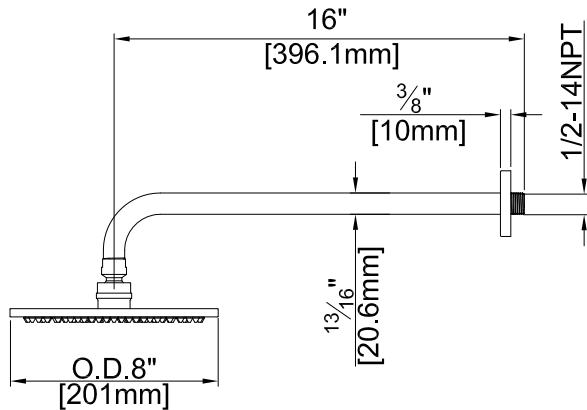
 Integral Stops

 Bubble Level

Polished Chrome (CP), Brushed Nickel (BN) and *Matte Black (MB)

Technical Drawing

F191203T-ABS



Warranty:

Limited Lifetime Faucet Warranty against material and manufacturing defects for residential use.
2 Year Limited Warranty on all industrial, commercial and business applications.

Codes and Standards:

ANSI/ASME A112.18.1
CSA B125.1
IAPMO / cUPC Listed
EPA Watersense Listed
ADA Compliant

Flow Rate:

Showerhead 1.8 gpm @ 60 psig