

## Specifications:

- Metal construction for durability and reliability
- Pressure balancing volume control
- Maximum temperature limit stop for added safety
- Integral stop check valves for easy maintenance
- Requires the fluid F1001B or F1021B pressure balancing valve, (sold separately and available in solder, PEX and PEX-W, F1960 Expansion PEX.)

## Components:

F1001T .....	Cartridge Sleeve
FP6019041 .....	Yaletown Handle
FP6001033-1PB .....	Square Cover Plate
FP6007108 .....	16" Rain Shower Arm
FP6001150 .....	8" Square Rain Showerhead


## Yaletown 8" Square Rain Showerhead Only Trim Kit

F191098T-ABS



## Features:

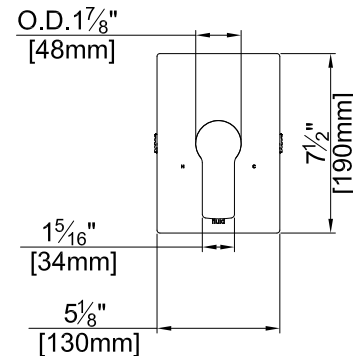
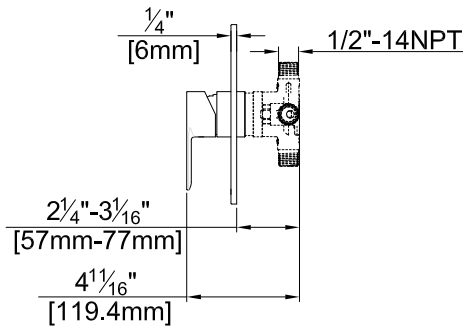
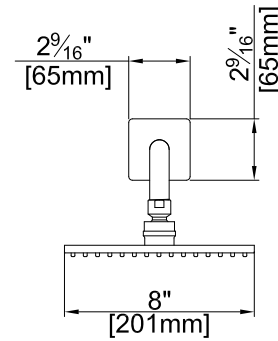
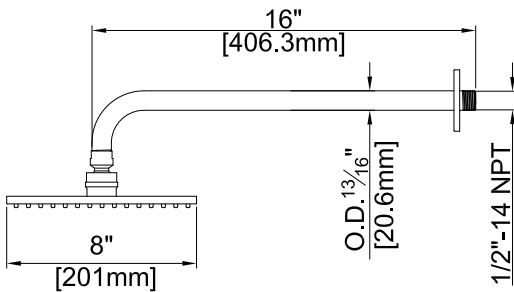
 Requires non-diverting F1001B or F1021B valve

 Integral Stops  Bubble Level

Polished Chrome (CP), Brushed Nickel (BN) and \*Matte Black (MB)

## Technical Drawing

F191098T-ABS



### Warranty:

Limited Lifetime Faucet Warranty against material and manufacturing defects for residential use.  
2 Year Limited Warranty on all industrial, commercial and business applications.

### Codes and Standards:

ANSI/ASME A112.18.1  
CSA B125.1  
IAPMO / cUPC Listed  
EPA Watersense Listed  
ADA Compliant

### Flow Rate:

Showerhead 1.8 gpm @ 60 psig