

Specifications:

- Metal construction for durability and reliability
- Pressure balancing volume control
- Maximum temperature limit stop for added safety
- Integral stop check valves for easy maintenance
- Requires the fluid F1001B or F1021B pressure balancing valve, (sold separately and available in solder, PEX and PEX-W, F1960 Expansion PEX.)

Components:

F1001T	Sleeve Tube and Cap
FP6019041	Yaletown Handle
FP6001035-1PB	Round Cover Plate
FP6000350	6" Showerhead
FP6016008	8" Shower Arm

Yaletown 6" Showerhead Only Trim Kit


F191037T



Features:

 Requires non-diverting F1001B or F1021B valve

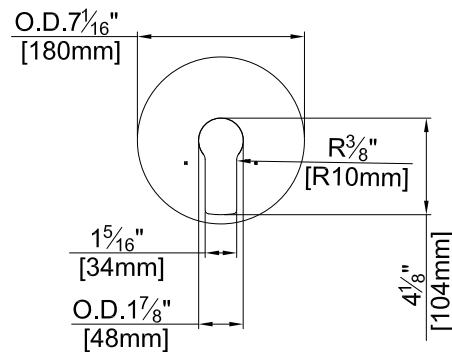
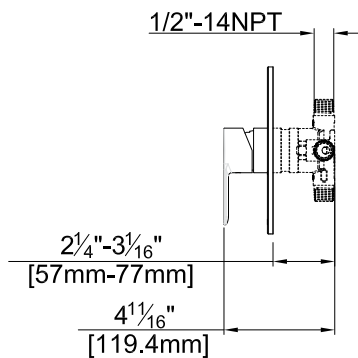
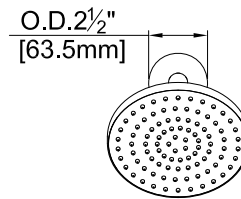
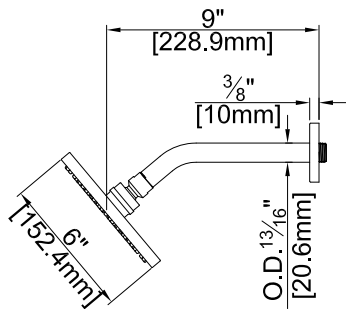
 Integral Stops

 Bubble Level

Polished Chrome (CP), Brushed Nickel (BN) and Matte Black (MB)

Technical Drawing

F191037T



Warranty:

Limited Lifetime Faucet Warranty against material and manufacturing defects for residential use.
2 Year Limited Warranty on all industrial, commercial and business applications.

Codes and Standards:

ANSI/ASME A112.18.1
CSA B125.1
IAPMO / cUPC Listed
ADA Compliant

Flow Rate:

Showerhead 1.8 gpm @ 60 psig

Low Flow Alternative: Showerhead @ 1.5 gpm: **F191037T-15**