

## Specifications:

- Metal construction for durability and reliability
- Pressure balancing volume control
- Max-temperature limit stop for added safety
- Integral stop check valves for easy maintenance
- Requires the fluid F1001B or F1021B pressure balancing valve, (sold separately and available in solder, PEX and PEX-W.)

## Components:

F1001T .....	Sleeve Tube and Cap
FP6028341 .....	Wisdom Handle
FP6001035-1PB .....	Round Cover Plate
F6057034.....	8" Pipe Tub Spout

## Wisdom 8" Pipe Tub Spout Only Trim Kit


F281084T




## Features:

 Requires non-diverting F1001B or F1021B valve

 Integral Stops

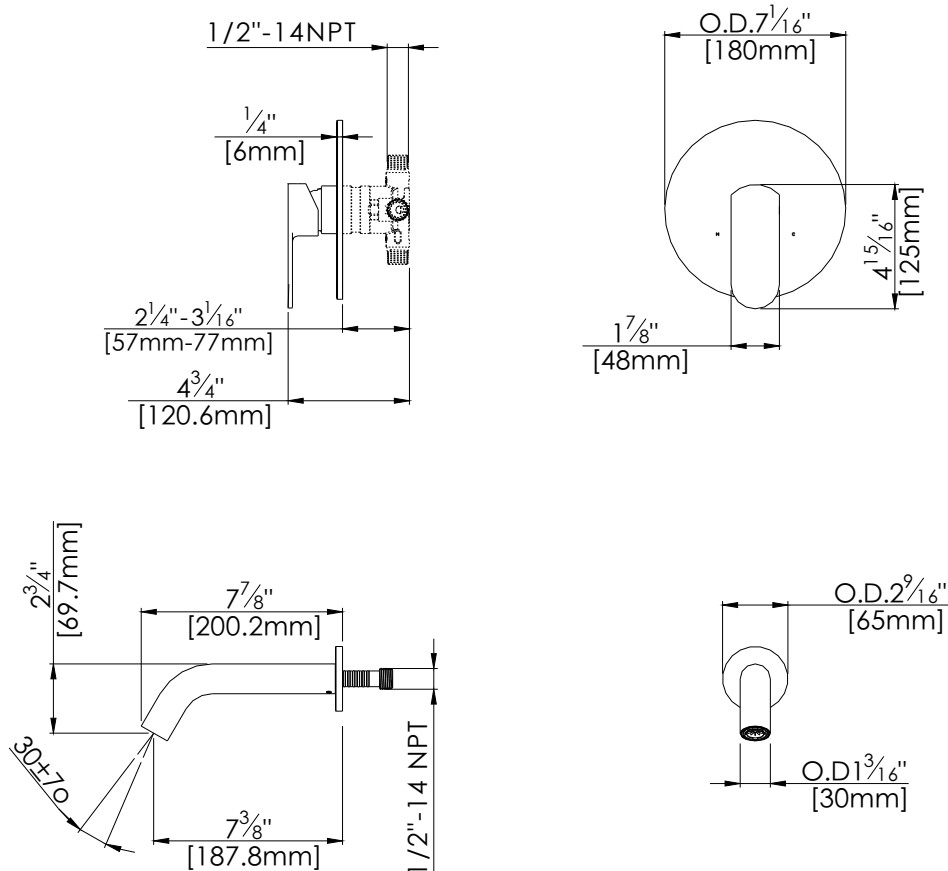
 Bubble Level

 Speed Connect

Polished Chrome (CP) , Brushed Nickel (BN) & Matte Black (MB)

## Technical Drawing

F281084T

**Warranty:**

Limited Lifetime Faucet Warranty  
against material and manufacturing  
defects for residential use.

2 Year Limited Warranty on all industrial,  
commercial and business applications.

**Codes and Standards:**

ANSI/ASME A112.18.1

CSA B125.1

IAPMO / cUPC Listed

ADA Compliant

**Flow Rate:**

Tub Spout 4.5 gpm @ 60 psig