

Specifications:

- Metal construction for durability and reliability
- Pressure balancing volume control with 2-way single handle diverting
- Max-temperature limit stop for added safety
- Integral stop check valves for easy maintenance
- Requires the fluid F1002B or F1042B pressure balancing valve, (sold separately and available in solder, PEX and PEX-W.)

Components:

F1001T	Sleeve Tube and Cap
FP6028341	Wisdom Handle
FP6001035-2PS	Round Cover Plate
FP6016008	8" Shower Arm
FP6000350	6" Showerhead
FP6057034	Pipe Tub Spout

Wisdom Tub & 6" Shower Trim Kit (Single Handle)


F284108T



Features:

 Requires 2-way diverting F1002B or F1042B valve

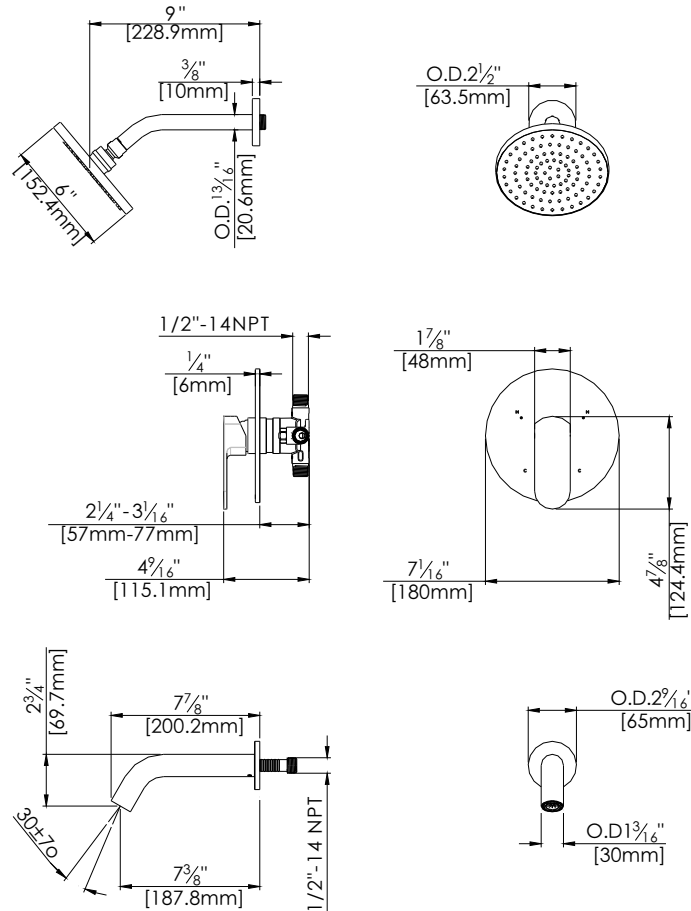
 Integral Stops  Bubble Level

 Speed Connect

Polished Chrome (CP), Brushed Nickel (BN) and Matte Black (MB)

Technical Drawing

F284108T



Warranty:

Limited Lifetime Faucet Warranty
against material and manufacturing
defects for residential use.

2 Year Limited Warranty on all industrial,
commercial and business applications.

Codes and Standards:

ANSI/ASME A112.18.1

CSA B125.1

IAPMO / cUPC Listed

ADA Compliant

Flow Rate:

Showerhead 1.8 gpm @ 60 psig

Tub Spout 4.5 gpm @ 60 psig

Low Flow Alternative: Showerhead
@ 1.5 gpm: **F284108T-15**