

Specifications:

- ➔ Metal construction for durability and reliability
- ➔ Pressure balancing volume control with 3-way, two handle diverting
- ➔ Max-temperature limit stop for added safety
- ➔ Integral stop check valves for easy maintenance
- ➔ ADA compliant with Alternate Handle below
- ➔ Requires the fluid F1003B or F1023B pressure balancing valve, (sold separately and available with shut off or **sharing in solder, PEX and PEX-W.)

Components:

F1001T	Sleeve Tube and Cap
FP6028341	Wisdom Handle
FP801013	Diverter Sleeve
FP605752	Diverter Handle
FP6001143-3PB	Cover Plate
FP6006008	16" Shower Arm
FP6002150	8" Rain Showerhead
FP40120	3-Function Hand Shower
FA802	Slide Bar With Integral Outlet
FP6001006	60" Shower Hose
FP6057034	Pipe Tub Spout

**sharing available where allowed by code


Kit with Alternate Handle: **F283029T-ABS-AR**



Features:

 Requires 3-way diverting F1003B or F1023B valve

 Integral Stops  Bubble Level

 Speed Connect

Wisdom Tub, 3-Function Hand Shower and 8" Rain Shower Kit

F283029T-ABS

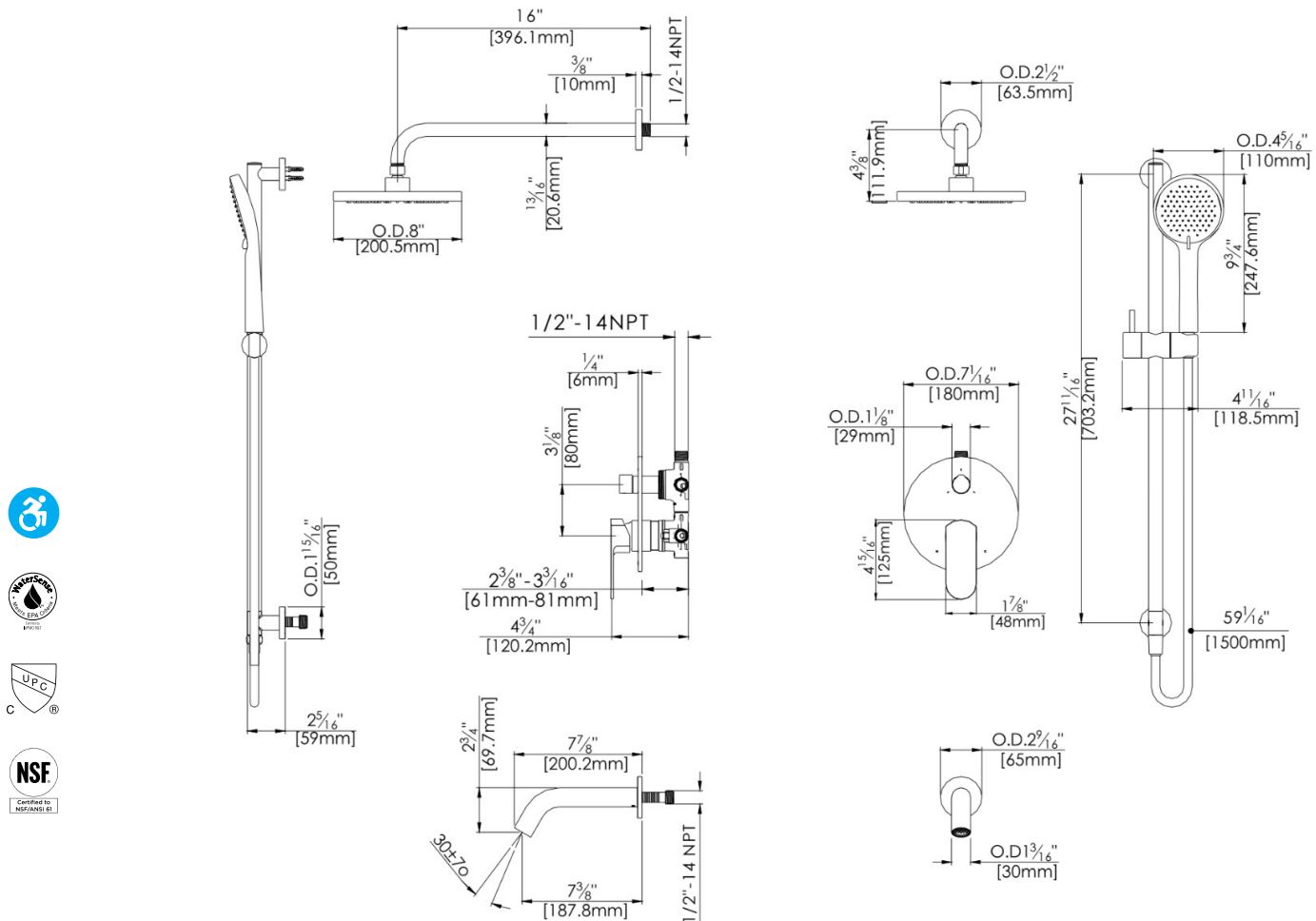


MB features: FP6001007MB Shower Hose & FP40130MB Hand Shower

Polished Chrome (CP), Brushed Nickel (BN) & *Matte Black (MB)

Technical Drawing

F283029T-ABS



Warranty:

Limited Lifetime Faucet Warranty against material and manufacturing defects for residential use.
2 Year Limited Warranty on all industrial, commercial and business applications.

Codes and Standards:

ANSI/ASME A112.18.1
CSA B125.1
IAPMO / cUPC Listed
ADA Compliant
EPA Watersense Listed (excluding MB Version)

Flow Rate:

Showerhead 1.8 gpm @ 60 psig
Hand Shower 1.8 gpm @ 60 psig
Tub Spout 4.5 gpm @ 60 psig

Low Flow Alternative: Hand Shower & @ 1.5 gpm: **F283029T-ABS-15**