

Specifications:

- ➔ Metal construction for durability and reliability
- ➔ Pressure balancing volume control with 2-way, two handle diverting
- ➔ Max-temperature limit stop for added safety
- ➔ Integral stop check valves for easy maintenance
- ➔ ADA compliant with Alternate Handle below
- ➔ Requires the fluid F1012B or F1022B pressure balancing valve, (sold separately and available with shut off in solder, PEX and PEX-W.)

Components:

F1001T	Sleeve Tube and Cap
FP6028341	Wisdom Handle
FP801013	Diverter Sleeve
FP605652	Diverter Handle
FP6001142-2PB	Round Cover Plate
FP40120	3-Function Hand Shower*
FA802	Slide Bar with Integral Outlet
FP6001006	60" Shower Hose*
FP6057034	Pipe Tub Spout


* The FP6001007MB Shower Hose & FP40130MB 3-Function Hand Shower are utilized in the F282074TMB Matte Black shower kit.

Features:

 Requires 2-way diverting F1012B or F1022B valve

 Integral Stops

 Bubble Level

 Speed Connect

Wisdom Tub & Hand Shower Trim Kit with FA802 Slide Bar

F282074T



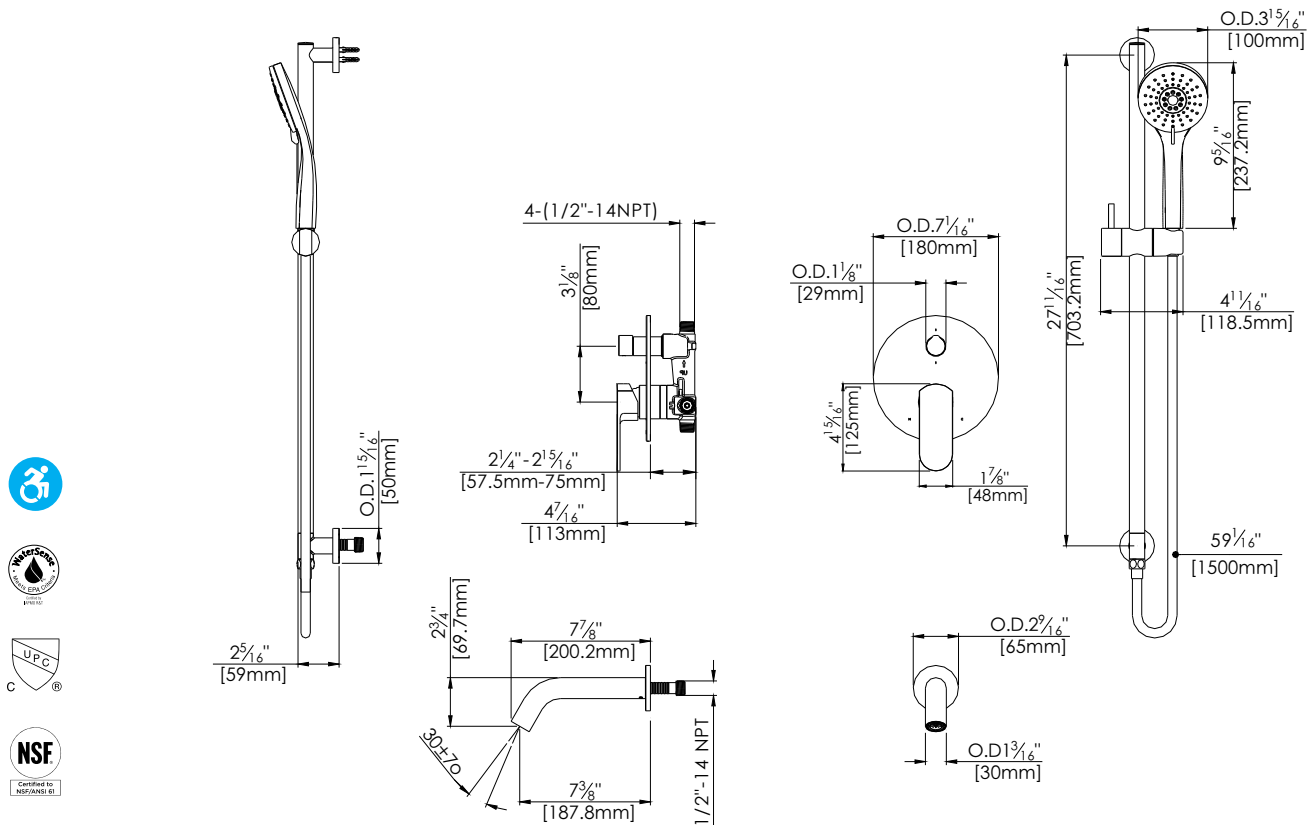
Polished Chrome (CP), Brushed Nickel (BN) and Matte Black (MB)

Kit with Alternate Handle: **F282074T-AR**



Technical Drawing

F282074T



Warranty:

Limited Lifetime Faucet Warranty against material and manufacturing defects for residential use.
2 Year Limited Warranty on all industrial, commercial and business applications.

Codes and Standards:

ANSI/ASME A112.18.1
CSA B125.1
IAPMO / cUPC Listed
ADA Compliant
EPA Watersense Listed (excluding MB Version)

Flow Rate:

Showerhead 1.8 gpm @ 60 psig
Tub Spout 4.5 gpm @ 60 psig
Low Flow Alternative: Hand Shower @ 1.5 gpm: **F282074T-15**