




Specifications:

- ➔ Metal construction for durability and reliability
- ➔ Swivel spout with 360 degree rotation
- ➔ Dual spray options: aerated or stream; activated by a turn of the spout tip
- ➔ High quality ceramic cartridge
- ➔ Single lever handle operation, allowing both volume and temperature control
- ➔ Limited to flow rate of 1.5 gpm (5.7 lpm) at 60 psi
- ➔ Maximum deck thickness of 1 - 3/4" (45 mm) with spacer, or 2 - 1/2" (63 mm) without spacer
- ➔ 1-1/2" (38 mm) single faucet hole size for drilling is recommended
- ➔ 8" deck plate for 3-hole installation is available and sold separately

Features:

-  Precision Ceramic Disc Cartridge
-  Metal Construction
-  Dual Spray Kitchen faucet

fluid Round Swivel Kitchen faucet

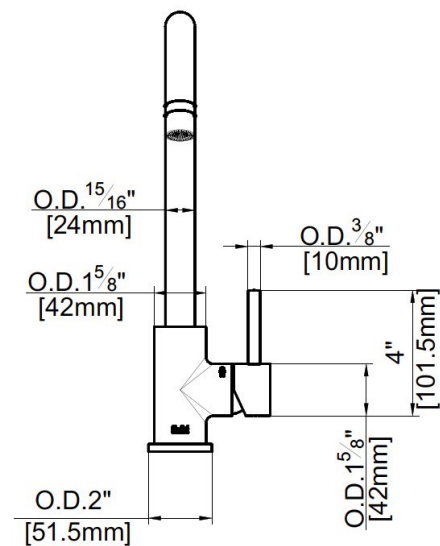
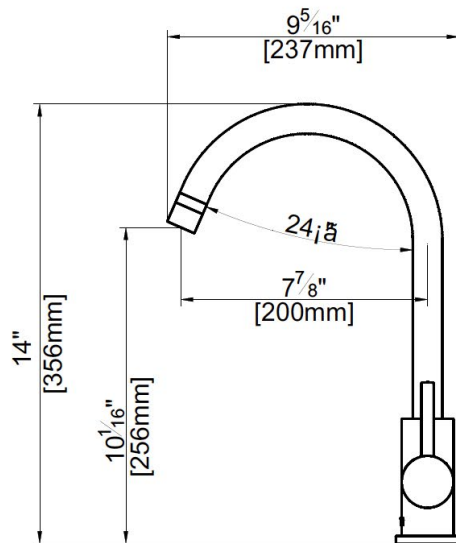
F826



Polished Chrome (CP), & PVD Stainless Steel (SS)

Technical Drawing

F826



Warranty:

Limited Lifetime Faucet Warranty against material and manufacturing defects for residential use.

2 Year Limited Warranty on all industrial, commercial and business applications.

Codes & Standards:

ANSI/ASME A112.18.1
CSA B125.1
NSF/ANSI/CAN 61: Q < 1
NSF / ANSI / CAN372
IAPMO / cUPC Listed
EPA Watersense Listed
ADA Compliant

Flow Rate:

1.5 gpm, (5.7 lpm), @ 60 psig