

## Specifications:

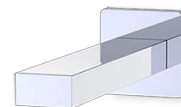
- Metal construction for durability and reliability
- Pressure balancing, single handle diverting and temperature control
- Max-temperature limit stop for added safety
- Integral stop check valves for easy maintenance
- Requires the fluid F1002B or F1042B pressure balancing valve, (sold separately and available in solder, PEX and PEX-W.)

## Components:

F1001T .....	Cartridge Sleeve
FP6016041 .....	Quad Handle
FP6001033-2PS .....	Square Cover Plate
FP6000150 .....	6" Square Showerhead
FP6027008 .....	8" Shower Arm
FP6056034 .....	8" Cubed Tub Spout

## Quad Cubed Tub Spout & 6" Shower Trim Kit


F164109T



## Features:

 Requires 2-way diverting F1002B or F1042B valve

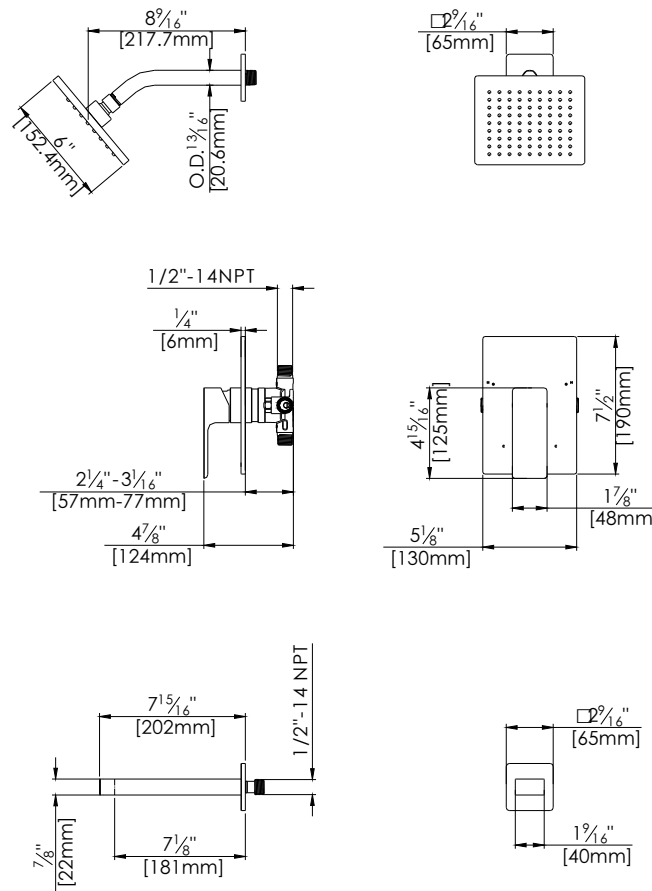
 Integral Stops  Bubble Level

 Speed Connect

Polished Chrome (CP) , Brushed Nickel (BN) & Matte Black (MB)

## Technical Drawing

F164109T



### Warranty:

Limited Lifetime Faucet Warranty against material and manufacturing defects for residential use.  
2 Year Limited Warranty on all industrial, commercial and business applications.

### Codes and Standards:

ANSI/ASME A112.18.1  
CSA B125.1  
IAPMO / cUPC Listed  
ADA Compliant

### Flow Rate:

Showerhead 1.8 gpm @ 60 psig  
Tub Spout 4.5 gpm @ 60 psig  
Low Flow Alternative: Showerhead @ 1.5 gpm: **F164109T-15**