

Specifications:

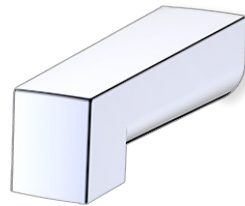
- Metal construction for durability and reliability
- Pressure balancing volume control
- Maximum-temperature limit stop for added safety
- Integral stop check valves for easy maintenance
- Requires the fluid F1001B or F1021B pressure balancing valve, (sold separately and available in solder, PEX and PEX-W.)

Components:

F1001T	Cartridge Sleeve
FP6016041	Quad Handle
FP6001033-1PB	Square Cover Plate
FP6096035	7.5" Square Tub Spout

Quad 7.5" Square Tub Spout Only Trim Kit


F161236T



Features:

 Requires non-diverting F1001B or F1021B valve

 Integral Stops

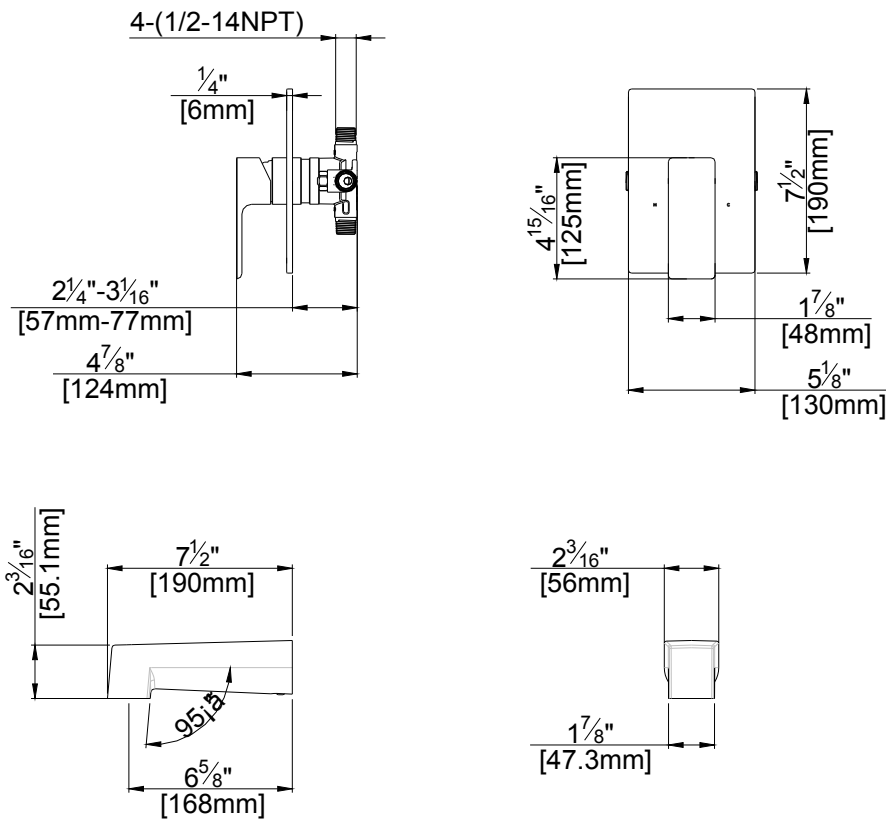
 Bubble Level

 Slip Fit

Polished Chrome (CP) , Brushed Nickel (BN) & Matte Black (MB)

Technical Drawing

F161236T



Warranty:

Limited Lifetime Faucet Warranty against material and manufacturing defects for residential use.
2 Year Limited Warranty on all industrial, commercial and business applications.

Codes and Standards:

ANSI/ASME A112.18.1
CSA B125.1
IAPMO / cUPC Listed
ADA Compliant

Flow Rate:

Tub Spout 4.5 gpm @ 60 psig