

Specifications:

- ➔ Metal construction for durability and reliability
- ➔ Pressure balancing volume control
- ➔ Max-temperature limit stop for added safety
- ➔ Integral stop check valves for easy maintenance
- ➔ Requires the fluid F1001B or F1021B pressure balancing valve, (sold separately and available in solder, PEX and PEX-W.)

Components:

| | |
|---------------------|----------------------------|
| F1001T | Cartridge Sleeve |
| FP6016041 | Quad Handle |
| FP6001033-1PB | Square Cover Plate |
| FP10130 | 4" Square Showerhead |
| FP6027008 | 8" Shower Arm |
| FP6098034L | Curved Diverting Tub Spout |

Quad Curved Diverting Tub Spout & 4" Shower Trim Kit


F161045T



Features:

 Requires non-diverting F1001B or F1021B valve

 Integral Stops

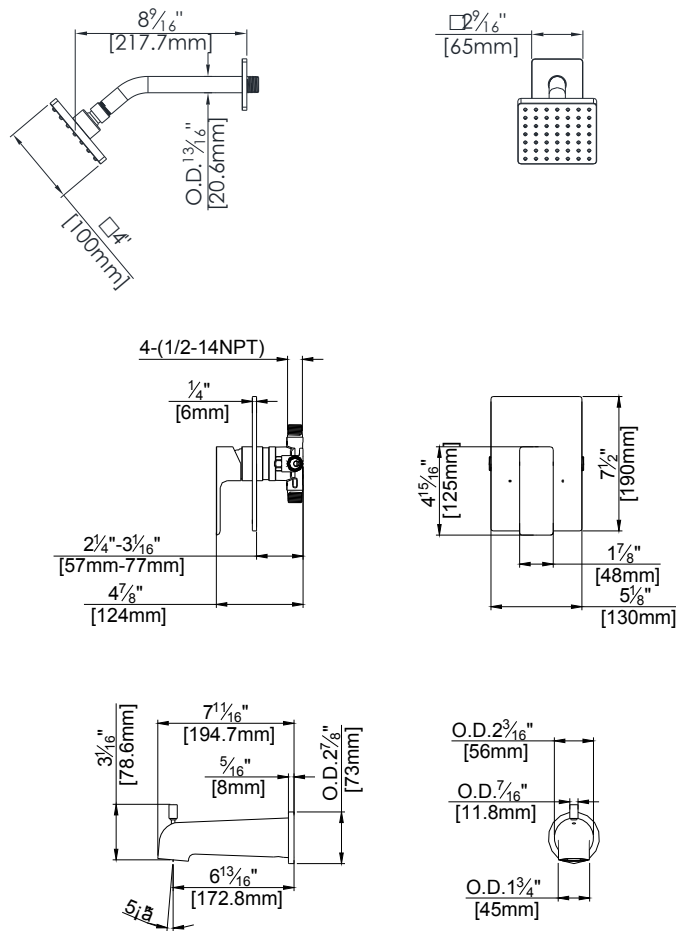
 Bubble Level

 Slip Fit

Polished Chrome (CP) , Brushed Nickel (BN) & Matte Black (MB)

Technical Drawing

F161045T



Warranty:

Limited Lifetime Faucet Warranty against material and manufacturing defects for residential use.
2 Year Limited Warranty on all industrial, commercial and business applications.

Codes and Standards:

ANSI/ASME A112.18.1
CSA B125.1
IAPMO / cUPC Listed

Flow Rate:

Showerhead 1.8 gpm @ 60 psig
Tub Spout 4.5 gpm @ 60 psig

Low Flow Alternative: Showerhead @ 1.5 gpm: **F161045T-15**