

## Specifications:

- Metal construction for durability and reliability
- Pressure balancing volume control
- Max-temperature limit stop for added safety
- Integral stop check valves for easy maintenance
- Requires the fluid F1001B or F1021B pressure balancing valve, (sold separately and available in solder, PEX and PEX-W.)

## Components:

F1001T .....	Cartridge Sleeve
FP6016041 .....	Quad Handle
FP6001033-1PB .....	Square Cover Plate
FP6000150 .....	6" Square Showerhead
FP6027008 .....	8" Shower Arm
FP6098034L .....	Curved Diverting Tub Spout

## Quad Curved Diverting Tub Spout & 6" Shower Trim Kit


F161022T



## Features:

 Requires non-diverting F1001B or F1021B valve

 Integral Stops

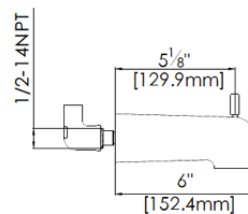
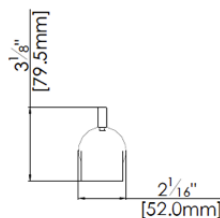
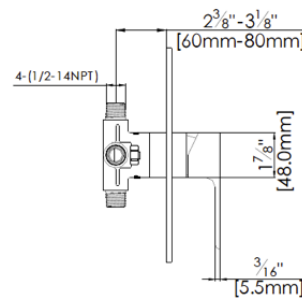
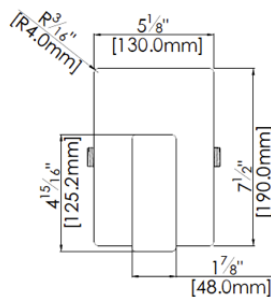
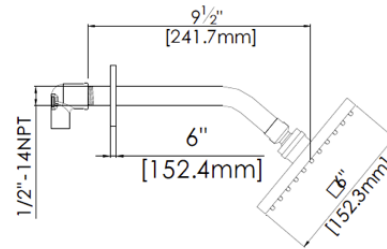
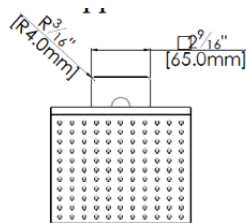
 Bubble Level

 Slip Fit

Polished Chrome (CP) , Brushed Nickel (BN) & Matte Black (MB)

## Technical Drawing

F161022T



## Warranty:

Limited Lifetime Faucet Warranty  
against material and manufacturing  
defects for residential use.

2 Year Limited Warranty on all industrial,  
commercial and business applications.

## Codes and Standards:

ANSI/ASME A112.18.1

CSA B125.1

IAPMO / cUPC Listed

## Flow Rate:

Showerhead 1.8 gpm @ 60 psig

Tub Spout 4.5 gpm @ 60 psig

Low Flow Alternative: Showerhead  
@ 1.5 gpm: **F161022T-15**