

Specifications:

- ➔ Metal construction
- ➔ Pressure balancing volume control with 3-way, two handle diverting
- ➔ Maximum temperature limit stop for added safety
- ➔ Integral stop check valves for easy maintenance
- ➔ Requires the fluid F1003B or F1023B pressure balancing valve, (sold separately and available with shut off or **sharing in solder, PEX and PEX-W.)

Components:

F1001T	Sleeve Tube and Cap
FP6016041	Quad Handle
FP801013	Diverter Sleeve
FP605752	Diverter Handle
FP6001143-3PB	Square Cover Plate
FP6027008	8" Shower Arm
FP6000150	6" Showerhead
FP40120	3-Function Hand Shower
FA803	Slide Bar With Integral Outlet
FP6001006	60" Shower Hose
FP6016034	Quad / Jovian Tub Spout

**sharing available where allowed by code


Kit with Alternate Handle: **F163027T-AS**



Features:

 Requires 3-way diverting F1003B or F1023B valve

 Integral Stops  Bubble Level

 Speed Connect

Quad Tub, 6" Shower & 3-Function Hand Shower Trim Kit

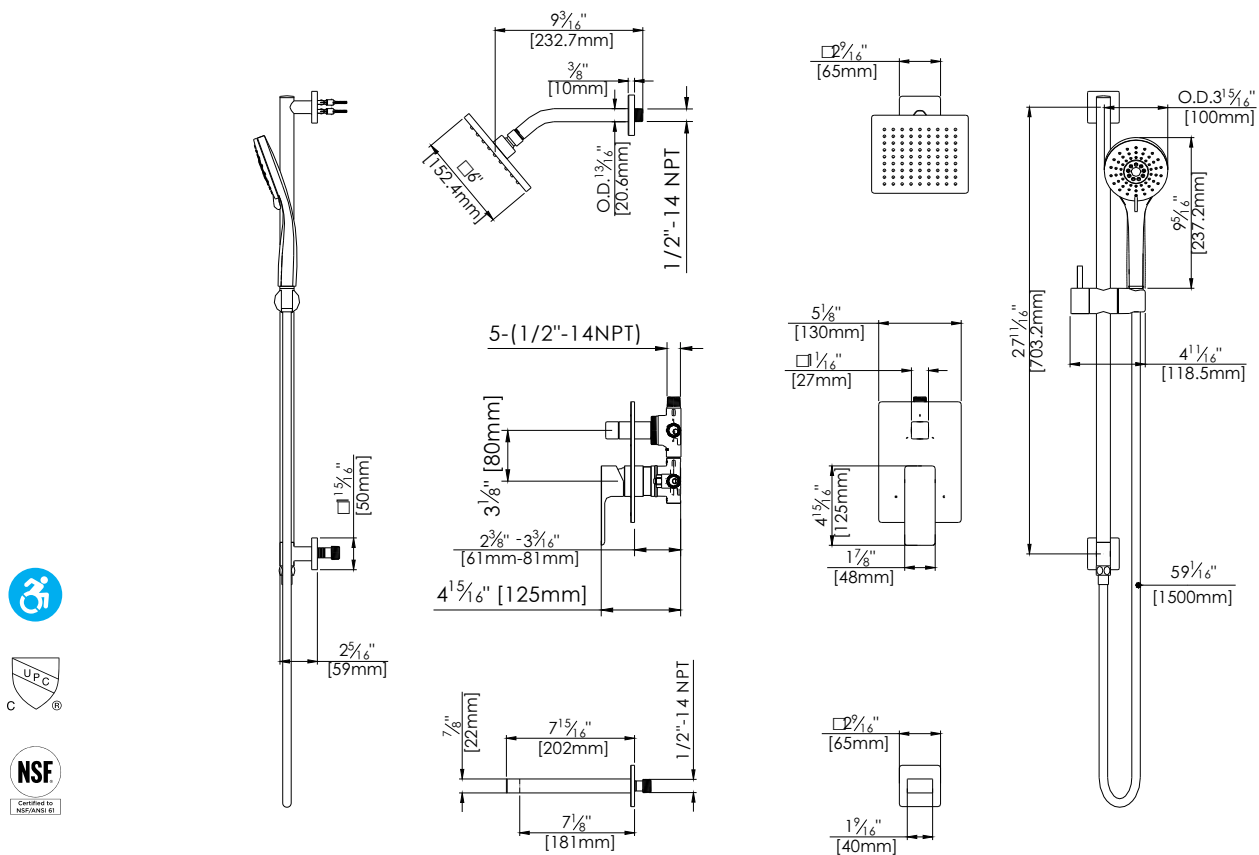
F163027T



Polished Chrome (CP) and Brushed Nickel (BN)

Technical Drawing

F163027T



Warranty:

Limited Lifetime Faucet Warranty against material and manufacturing defects for residential use.
2 Year Limited Warranty on all industrial, commercial and business applications.

Codes and Standards:

ANSI/ASME A112.18.1
CSA B125.1
IAPMO / cUPC Listed
ADA Compliant

Flow Rate:

Showerhead 1.8 gpm @ 60 psig
Hand Shower 1.8 gpm @ 60 psig
Tub spout 4.5 gpm @ 60 psig

Low Flow Alternative: Hand Shower & Showerhead @ 1.5 gpm: **F163027T-15**