

Specifications:

- Metal construction for durability and reliability
- Pressure balancing, single handle diverting and temperature control
- Max-temperature limit stop for added safety
- Integral stop check valves for easy maintenance
- Requires the fluid F1001B or F1021B pressure balancing valve, (sold separately and available in solder, PEX and PEX-W.)

Components:

F1001T	Sleeve Tube and Cap
FP6018041	Utopia Handle
FP6001035-2PS	Round Cover Plate
FP6016008	8" Shower Arm
FP10120	4" Showerhead
FP6098035L	7.5" Curved Tub Spout

Features:

 Requires non-diverting F1001B or F1021B valve

 Integral Stops  Bubble Level

 Slip Fit Connection

Utopia Curved Tub Spout & 4" Shower Trim Kit, (F1002B)

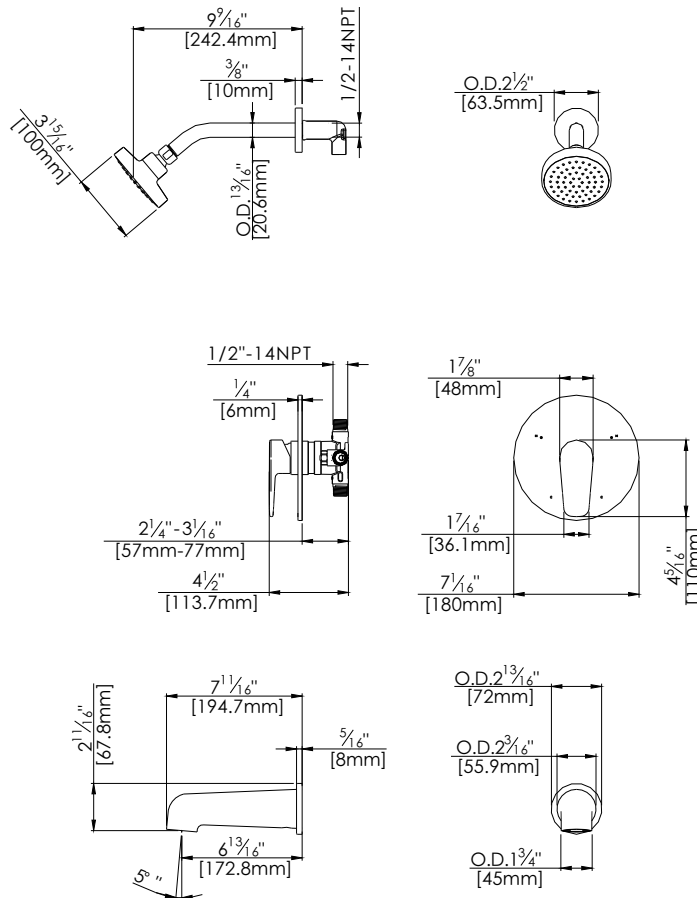
F184107T



Polished Chrome (CP) and Brushed Nickel (BN)

Technical Drawing

F184107T



Warranty:

Limited Lifetime Faucet Warranty
against material and manufacturing
defects for residential use.

2 Year Limited Warranty on all industrial,
commercial and business applications.

Codes and Standards:

ANSI/ASME A112.18.1
CSA B125.1
IAPMO / cUPC Listed
ADA Compliant

Flow Rate:

Tub Spout 4.5 gpm @ 60 psig
Showerhead 1.8 gpm @ 60 psig

Low Flow Alternative: Showerhead @ 1.5
gpm: **F184107T-15**