

Specifications:

- ➔ Metal construction for durability and reliability
- ➔ Pressure balancing volume control
- ➔ Max-temperature limit stop for added safety
- ➔ Integral stop check valves for easy maintenance
- ➔ Requires the fluid F1001B or F1021B pressure balancing valve, (sold separately and available in solder, PEX and PEX-W.)

Components:

F1001T	Sleeve Tube and Cap
FP6018041	Utopia Handle
FP6001035-1PB	Round Cover Plate
FP6016008	8" Shower Arm
FP10120	4" Showerhead
FP6098034L	7.5" Curved Diverting Tub Spout

Utopia 4" Showerhead and Diverting Tub Spout Trim Kit

F181045T



Features:

 Requires non-diverting F1001B or F1021B valve

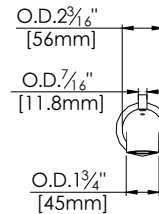
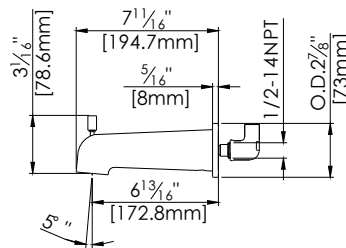
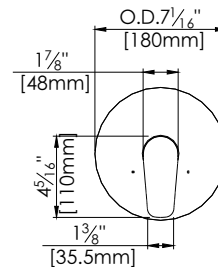
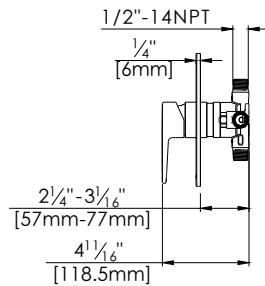
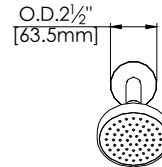
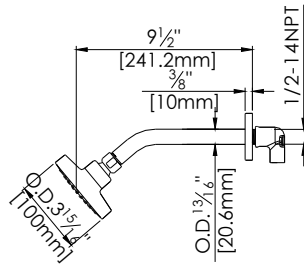
 Integral Stops  Bubble Level

 Slip Fit Connection

Polished Chrome (CP) and Brushed Nickel (BN)

Technical Drawing

F181045T



Warranty:

Limited Lifetime Faucet Warranty against material and manufacturing defects for residential use.

2 Year Limited Warranty on all industrial, commercial and business applications.

Codes and Standards:

ANSI/ASME A112.18.1

CSA B125.1

IAPMO / cUPC Listed

Flow Rate:

Tub Spout 4.5 gpm @ 60 psig

Showerhead 1.8 gpm @ 60 psig

Low Flow Alternative: Showerhead @ 1.5 gpm: **F181045T-15**