

Specifications:

- Metal construction for durability and reliability
- Pressure balancing volume control with 2-way, single handle diverting
- Max-temperature limit stop for added safety
- Integral stop check valves for easy maintenance
- Requires the fluid F1002B or F1042B pressure balancing valve, (sold separately and available in solder, PEX and PEX-W.)

Components:

F1001T	Sleeve tube and cap
FP6018041	Utopia Handle
FP6001035-2PS	Round Cover Plate
FP6016008	8" Shower Arm
FP6000350	6" Showerhead
FP40120	3-Function Hand Shower
FA101	Slide Bar
FP6082048	Wall Outlet
FP6001006	60" Shower Hose

Features:

 Requires 2-way diverting F1002B or F1042B valve

 Integral Stops  Bubble Level

Utopia 6" Showerhead & 3-Function Hand Shower Trim Kit

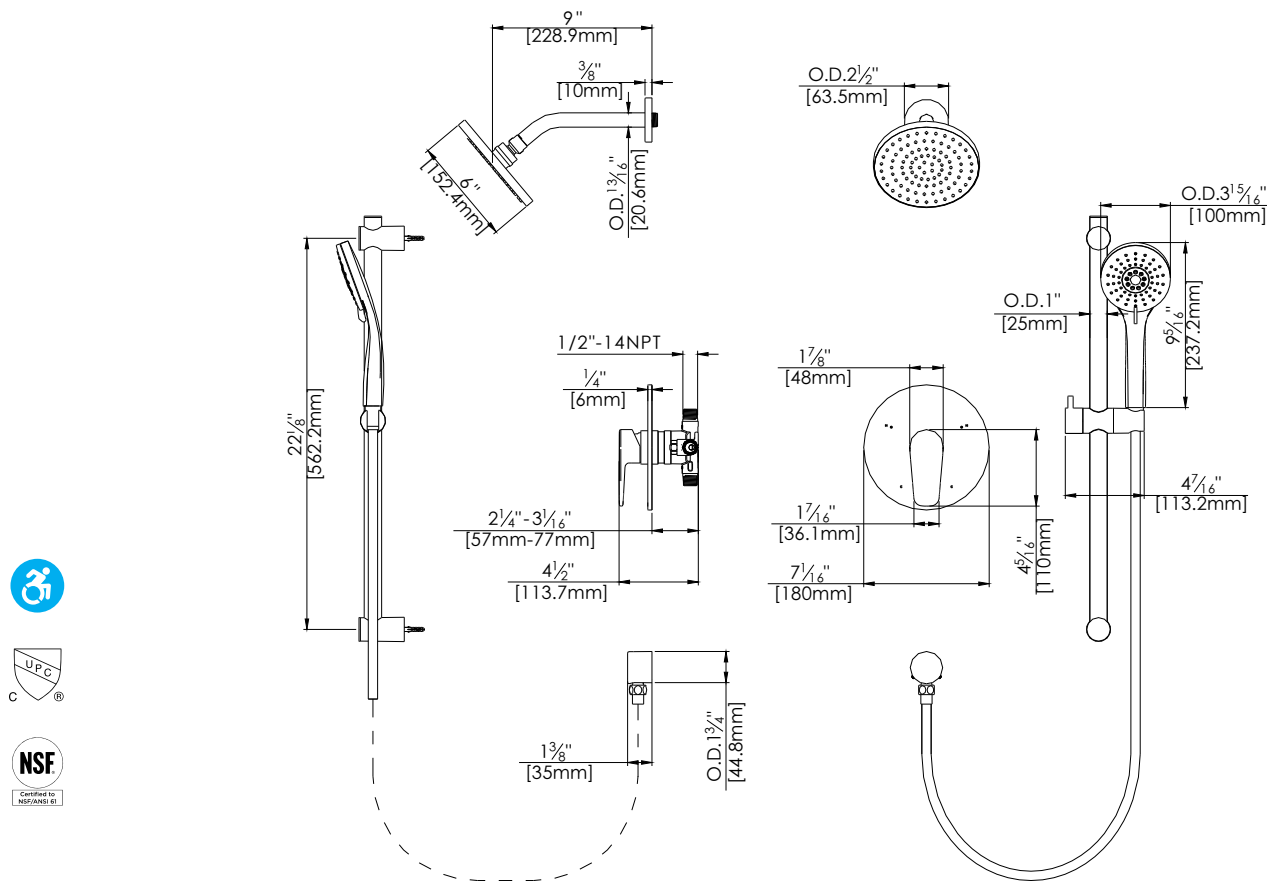
F184105T



Polished Chrome (CP) and Brushed Nickel (BN)

Technical Drawing

F184105T



Warranty:

Limited Lifetime Faucet Warranty
against material and manufacturing
defects for residential use.

2 Year Limited Warranty on all industrial,
commercial and business applications.

Codes and Standards:

ANSI/ASME A112.18.1

CSA B125.1

IAPMO / cUPC Listed

ADA Compliant

Flow Rate:

Showerhead 1.8 gpm @ 60 psig

Hand Shower 1.8 gpm @ 60 psig

Low Flow Alternative: Showerhead &
Hand Shower @ 1.5 gpm: **F184105T-15**