

Specifications:

- ➔ Metal construction for durability and reliability
- ➔ Pressure balancing volume control with 3-way, two handle diverting
- ➔ Max-temperature limit stop for added safety
- ➔ Integral stop check valves for easy maintenance
- ➔ Requires the fluid F1003B or F1023B pressure balancing valve, (sold separately and available with shut off or **sharing in solder, PEX and PEX-W.)

Components:

F1001T	Sleeve tube and cap
FP6018041	Utopia Handle
FP801013	Diverter Sleeve
FP605752	Diverter Handle
FP6001143-3PB	Round Cover Plate
FP6018308	3" Ceiling Shower Arm
FP6002050	8" Showerhead
FP6016008	8" Shower Arm
FP6000350	6" Showerhead
FP6001006	60" Shower Hose
FA802	Slide Bar With Integral Outlet
FP40120	3-Function Hand Shower

**sharing available where allowed by code


Kit with Alternate Handle: **F183036T-ABS-AR**




Features:

 Requires 3-way diverting F1003B or F1023B valve

 Integral Stops

 Bubble Level

 Speed Connect

Utopia Double Showerhead and 3-Function Hand Shower Trim Kit

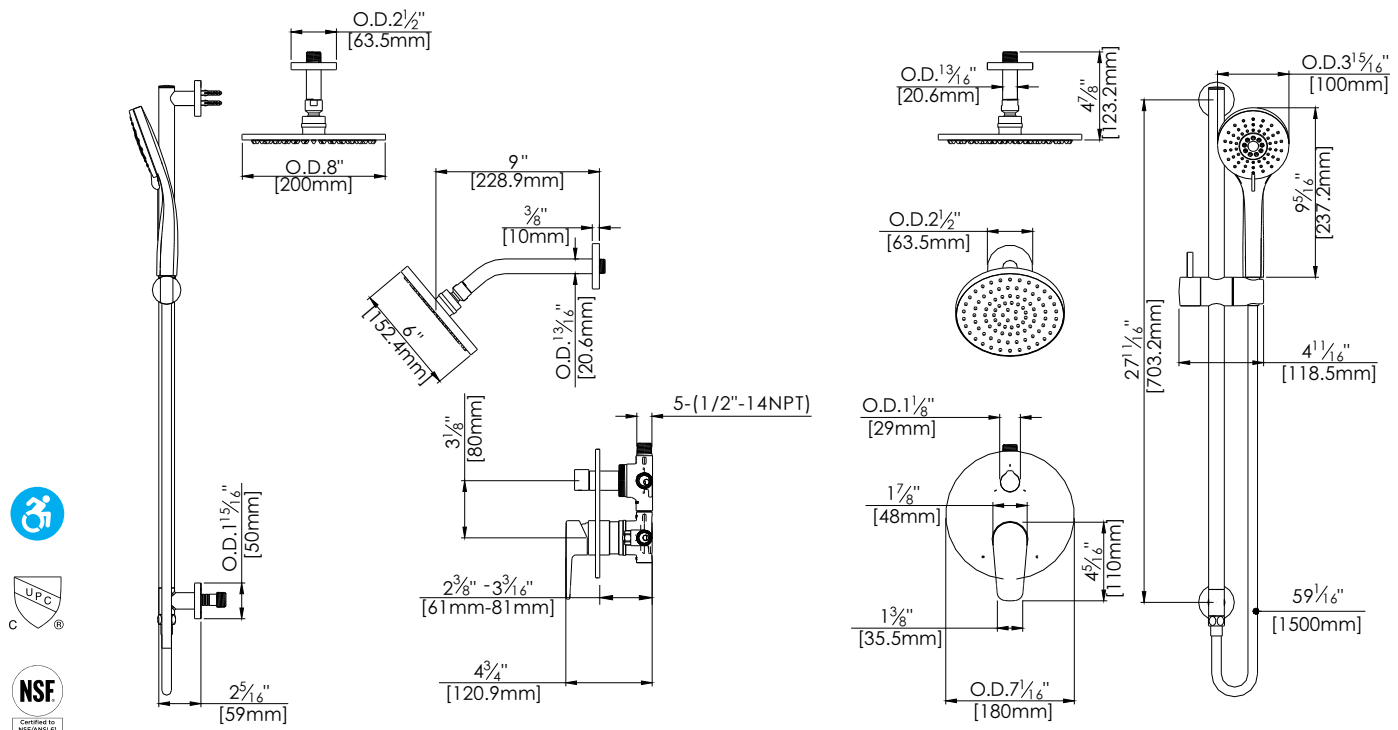
F183036T-ABS



Polished Chrome (CP), Brushed Nickel (BN) and Matte Black (MB)

Technical Drawing

F183036T-ABS



Warranty:

Limited Lifetime Faucet Warranty
against material and manufacturing
defects for residential use.

2 Year Limited Warranty on all industrial,
commercial and business applications.

Codes and Standards:

ANSI/ASME A112.18.1

CSA B125.1

IAPMO / cUPC Listed

ADA Compliant

Flow Rate:

Showerheads 1.8 gpm @ 60 psig

Hand Shower 1.8 gpm @ 60 psig

Low Flow Alternative: Hand Shower
& 6" Showerhead @ 1.5 gpm:

F183036T-ABS-15