

## Specifications:

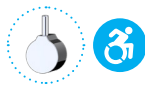
- ➔ Metal construction for durability and reliability
- ➔ Pressure balancing volume control with 3-way, two handle diverting
- ➔ Max-temperature limit stop for added safety
- ➔ Integral stop check valves for easy maintenance
- ➔ Requires the fluid F1003B or F1023B pressure balancing valve, (sold separately and available with shut off or \*\*sharing in solder, PEX and PEX-W.)

## Components:

F1001T .....	Sleeve tube and cap
FP6018041 .....	Utopia Handle
FP801013 .....	Diverter Sleeve
FP605752 .....	Diverter Handle
FP6001143-3PB .....	Round Cover Plate
FP6016008 .....	8" Shower Arm
FP6000350 .....	6" Showerhead
FP40120 .....	3-Function Hand Shower*
FA802 .....	Slide Bar With Integral Outlet
FP6001006 .....	60" Shower Hose*
FP6031034 .....	Utopia Tub Spout

\*\*sharing available where allowed by code


Kit with Alternate Handle: **F183027T-AR**



## Features:

 Requires 3-way diverting F1003B or F1023B valve

 Integral Stops  Bubble Level

 Speed Connect

## Utopia Tub, 6" Shower & 3-Function Hand Shower Trim Kit

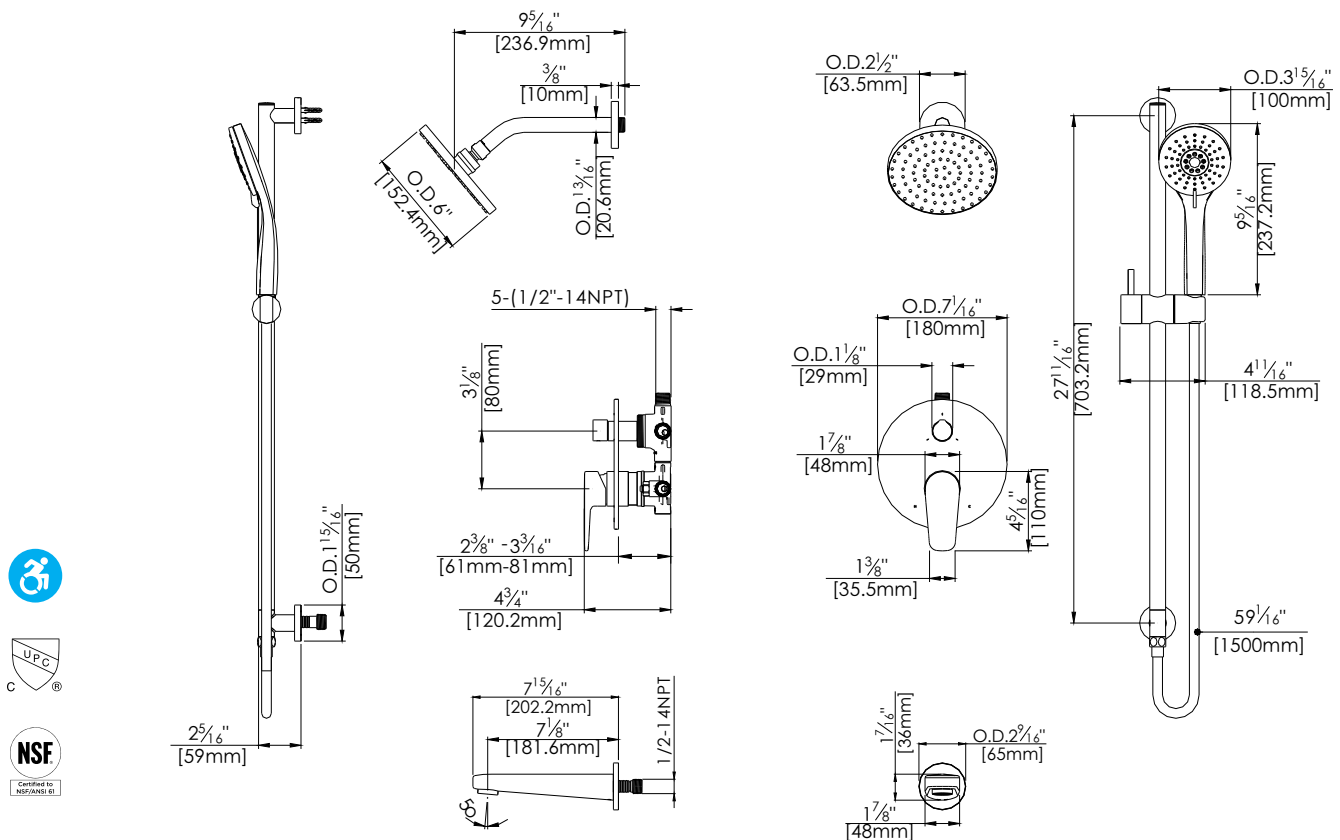
F183027T



Polished Chrome (CP) and Brushed Nickel (BN)

## Technical Drawing

F183027T



## Warranty:

Limited Lifetime Faucet Warranty against material and manufacturing defects for residential use.

2 Year Limited Warranty on all industrial, commercial and business applications.

## Codes and Standards:

ANSI/ASME A112.18.1

CSA B125.1

IAPMO / cUPC Listed

ADA Compliant

## Flow Rate:

Showerhead 1.8 gpm @ 60 psig

Hand Shower 1.8 gpm @ 60 psig

Tub spout 4.5 gpm @ 60 psig

Low Flow Alternative: Hand Shower & Showerhead @ 1.5 gpm: **F183027T-15**