

## Specifications:

- Metal construction for durability and reliability
- Pressure balancing volume control with 3-way, two handle diverting
- Max-temperature limit stop for added safety
- Integral stop check valves for easy maintenance
- Requires the fluid F1003B or F1023B pressure balancing valve, (sold separately and available with shut off or \*\*sharing in solder, PEX and PEX-W.)

## Components:

|                     |                                |
|---------------------|--------------------------------|
| F1001T .....        | Sleeve tube and cap            |
| FP6018041 .....     | Utopia Handle                  |
| FP801013 .....      | Diverter Sleeve                |
| FP605752 .....      | Diverter Handle                |
| FP6001143-3PB ..... | Round Cover Plate              |
| FP6018008 .....     | 6" Ceiling Shower Arm          |
| FP6002150 .....     | 8" Round Rain Showerhead       |
| FP40120 .....       | 3-Function Hand Shower         |
| FA802 .....         | Slide Bar With Integral Outlet |
| FP6001006 .....     | 60" Shower Hose                |
| FP6031034 .....     | Utopia Tub Spout               |

\*\*sharing available where allowed by code


Kit with Alternate Handle: **F183009T-ABS-AR**



## Features:

 Requires 3-way diverting F1003B or F1023B valve

 Integral Stops  Bubble Level

 Speed Connect

## Utopia Tub, 8" Ceiling Rain Shower & Hand Shower Trim Kit

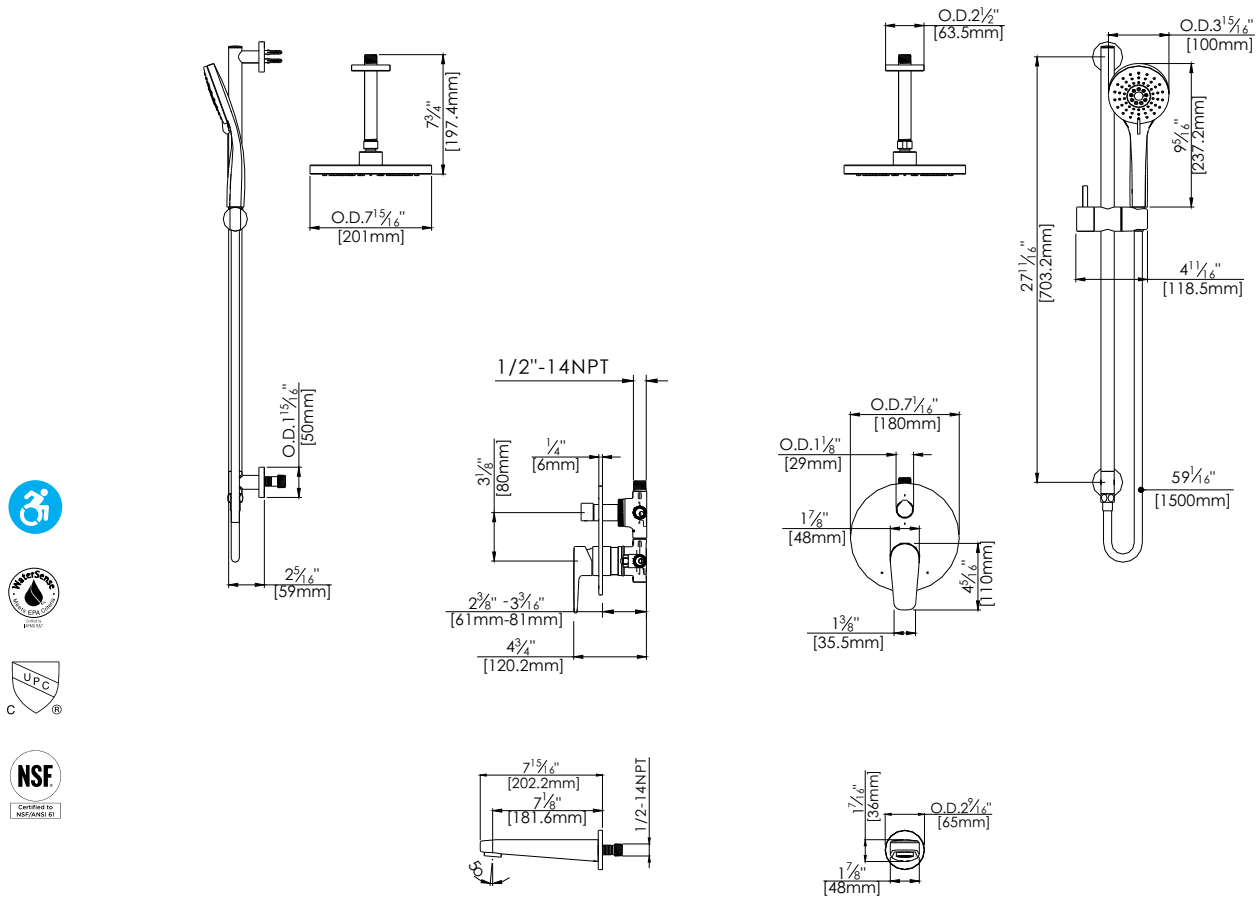
F183009T-ABS



Polished Chrome (CP) and Brushed Nickel (BN)

## Technical Drawing

## F183009T-ABS



### Warranty:

Limited Lifetime Faucet Warranty against material and manufacturing defects for residential use.  
2 Year Limited Warranty on all industrial, commercial and business applications.

### Codes and Standards:

ANSI/ASME A112.18.1  
CSA B125.1  
IAPMO / cUPC Listed  
EPA Watersense Listed  
ADA Compliant

### Flow Rate:

Showerhead 1.8 gpm @ 60 psig  
Hand Shower 1.8 gpm @ 60 psig  
Tub spout 4.5 gpm @ 60 psig

Low Flow Alternative: Hand Shower @ 1.5 gpm: **F183009T-ABS-15**