

Utopia Tub & Hand Shower Trim Kit with FA802 Slide Bar

F182074T

Specifications:

- ➔ Metal construction for durability and reliability
- ➔ Pressure balancing volume control with 2-way, two handle diverting
- ➔ Max-temperature limit stop for added safety
- ➔ Integral stop check valves for easy maintenance
- ➔ Requires the fluid F1012B or F1022B pressure balancing valve, (sold separately and available with shut off in solder, PEX and PEX-W.)

Components:


F1001T	Sleeve tube and cap
FP6018041	Utopia Handle
FP801013	Diverter Sleeve
FP605652	Diverter Handle
FP6001142-2PB	Round Cover Plate
FP40120	3-Function Hand Shower
FA802	Slide Bar with Integral Outlet
FP6001006	60" Shower Hose
FP6057034	Pipe Tub Spout


Kit with Alternate Handle: **F182074T-AR**



Features:

 Requires 2-way diverting F1012B or F1022B valve

 Integral Stops  Bubble Level

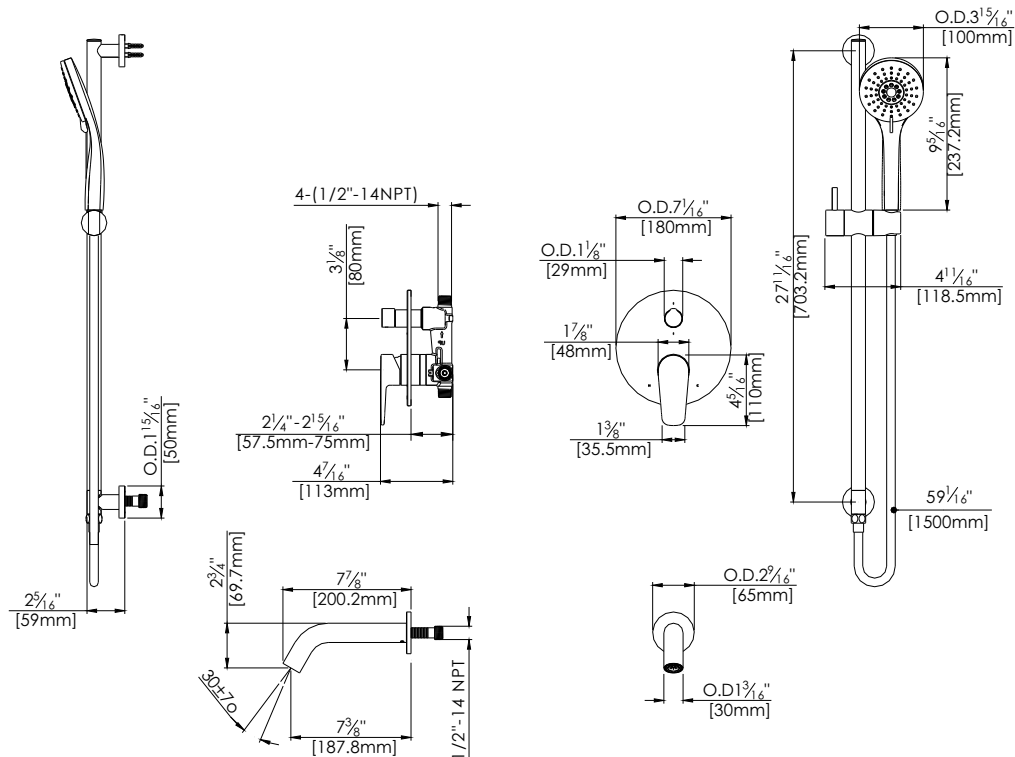
 Speed Connect



Polished Chrome (CP) and Brushed Nickel (BN)

Technical Drawing

F182074T



Warranty:

Limited Lifetime Faucet Warranty against material and manufacturing defects for residential use.

2 Year Limited Warranty on all industrial, commercial and business applications.

Codes and Standards:

ANSI/ASME A112.18.1

CSA B125.1

IAPMO / cUPC Listed

EPA Watersense Listed

ADA Compliant

Flow Rate:

Showerhead 1.8 gpm @ 60 psig

Tub Spout 4.5 gpm @ 60 psig

Low Flow Alternative: Hand Shower
@ 1.5 gpm: **F182074T-15**