

## Specifications:

- ➔ Metal construction for durability and reliability
- ➔ Pressure balancing volume control with 2-way, two handle diverting
- ➔ Max-temperature limit stop for added safety
- ➔ Integral stop check valves for easy maintenance
- ➔ Requires the fluid F1012B or F1022B pressure balancing valve, (sold separately and available with shut off or \*\*sharing in solder, PEX and PEX-W.)

## Components:

F1001T .....	Sleeve tube and cap
FP6018041 .....	Utopia Handle
FP801013 .....	Diverter Sleeve
FP605652 .....	Diverter Handle
FP6001142-2PB .....	Round Cover Plate
FP605652 .....	Diverter Handle
FP6006008 .....	16" Shower Arm
FP6002150 .....	8" Round Rain Showerhead
FP40120 .....	3-Function Hand Shower
FA802 .....	Slide Bar with Integral Outlet
FP6001006 .....	60" Shower Hose

\*\*sharing available where allowed by code


Kit with Alternate Handle: **F182025T-ABS-AR**



## Features:

 Requires 2-way diverting F1012B or F1022B valve

 Integral Stops  Bubble Level

 Speed Connect

## Utopia 8" Rain Showerhead & Hand Shower Trim Kit

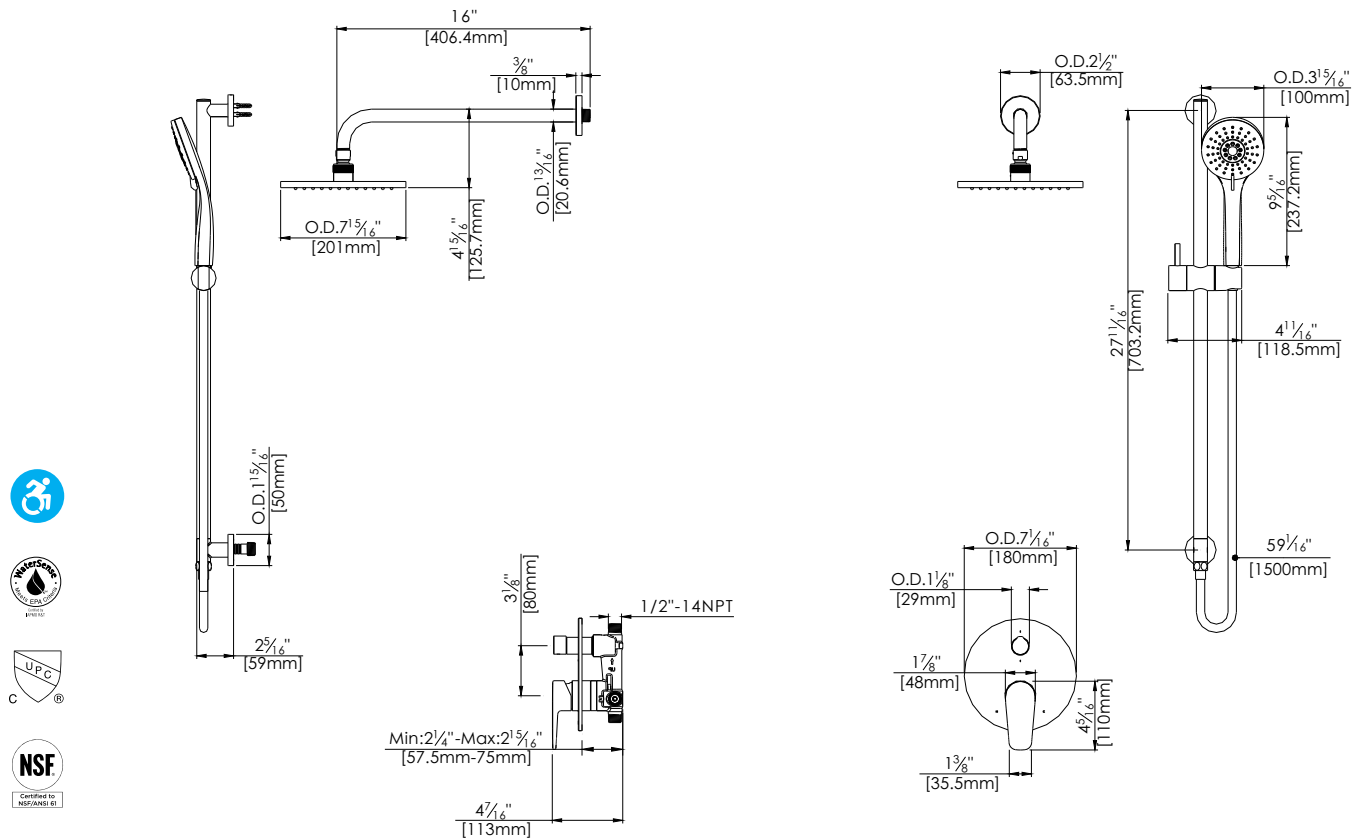
F182025T-ABS



Polished Chrome (CP) and Brushed Nickel (BN)

## Technical Drawing

## F182025T-ABS



### Warranty:

Limited Lifetime Faucet Warranty against material and manufacturing defects for residential use.  
2 Year Limited Warranty on all industrial, commercial and business applications.

### Codes and Standards:

ANSI/ASME A112.18.1  
CSA B125.1  
IAPMO / cUPC Listed  
EPA Watersense Listed  
ADA Compliant

### Flow Rate:

Showerhead 1.8 gpm @ 60 psig  
Hand Shower 1.8 gpm @ 60 psig

Low Flow Alternative: Hand Shower @ 1.5 gpm: **F182025T-ABS-15**