

Specifications:

- ➔ Metal construction for durability and reliability
- ➔ Pressure balancing volume control with 2-way two handle diverting
- ➔ Max-temperature limit stop for added safety
- ➔ Integral stop check valves for easy maintenance
- ➔ Requires the fluid F1012B or F1022B pressure balancing valve, (sold separately and available with shut off or **sharing in solder, PEX and PEX-W.)

Components:

F1001T	Sleeve tube and cap
FP6018041	Utopia Handle
FP801013	Diverter Sleeve
FP605652	Diverter Handle
FP6001142-2PB	Cover Plate
FP6016008	8" Shower Arm
FP10200	4" Eco Showerhead
FP6016008	8" Shower Arm
FP6001048	Round Hand Shower
FA105	Slide Bar
FP6002047	Wall Outlet
FP6001006	60" Shower Hose


**sharing available where allowed by code


Kit with Alternate Handle: **F182012T-AR**



Features:

 Requires 2-way diverting F1012B or F1022B valve

 Integral Stops  Bubble Level

 Speed Connect

Utopia 4" Eco Showerhead & Hand Shower Trim Kit

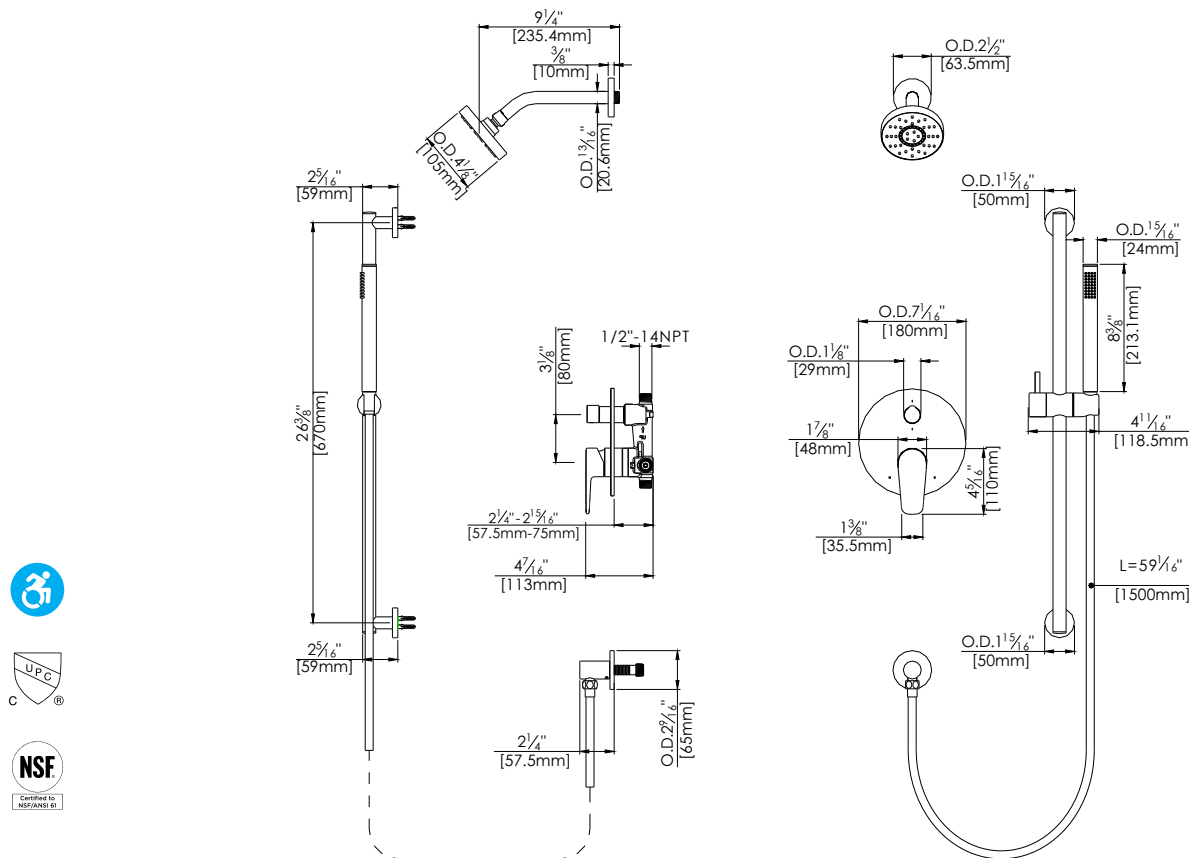
F182012T



Polished Chrome (CP) and Brushed Nickel (BN)

Technical Drawing

F182012T



Warranty:

Limited Lifetime Faucet Warranty
against material and manufacturing
defects for residential use.

2 Year Limited Warranty on all industrial,
commercial and business applications.

Codes and Standards:

ANSI/ASME A112.18.1

CSA B125.1

IAPMO / cUPC Listed

ADA Compliant

Flow Rate:

Showerhead 1.5 gpm @ 60 psig

Hand Shower 1.8 gpm @ 60 psig

Low Flow Alternative: Hand Shower
@ 1.5 gpm: **F182012T-15**