

Specifications:

- Metal construction for durability and reliability
- Pressure balancing volume control
- Max-temperature limit stop for added safety
- Integral stop check valves for easy maintenance
- Requires the fluid F1001B or F1021B pressure balancing valve, (sold separately and available in solder, PEX and PEX-W.)

Components:

F1001T	Sleeve Tube and Cap
FP6018041	Utopia Handle
FP6001035-1PB	Round Cover Plate
FP6002150	8" Round Rain Showerhead
FP6006008	16" Shower Arm

Utopia 8" Showerhead Only Trim Kit


F181097T-ABS



Features:

 Requires non-diverting F1001B or F1021B valve

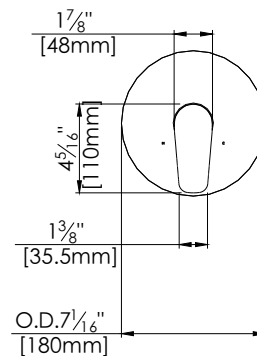
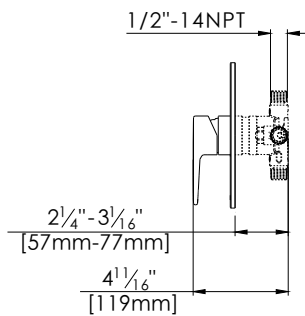
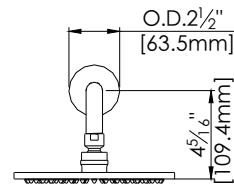
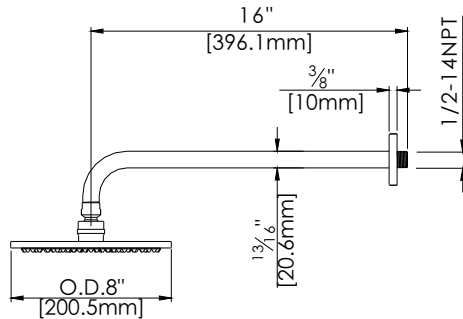
 Integral Stops

 Bubble Level

Polished Chrome (CP) and Brushed Nickel (BN)

Technical Drawing

F181097T-ABS



Warranty:

Limited Lifetime Faucet Warranty against material and manufacturing defects for residential use.
2 Year Limited Warranty on all industrial, commercial and business applications.

Codes and Standards:

ANSI/ASME A112.18.1
CSA B125.1
IAPMO / cUPC Listed
EPA Watersense Listed
ADA Compliant

Flow Rate:

Showerhead 1.8 gpm @ 60 psig