

Specifications:

- Metal construction for durability and reliability
- Pressure balancing volume control
- Max-temperature limit stop for added safety
- Integral stop check valves for easy maintenance
- Valve and trim packages are sold separately
- Requires the fluid F1001B or F1021B pressure balancing valve, (sold separately and available in solder, PEX and PEX-W.)

Components:

F1001T	Sleeve Tube and Cap
FP6024041	Blade Handle
FP6001035-1PB	Round Cover Plate
FP6055034	7.5" Round Diverting Tub Spout
FP6016008	8" Shower Arm
FP10120	4" Round Shower Head

Features:

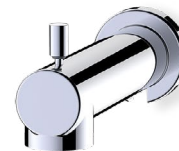
 Requires non-diverting F1001B or F1021B valve

 Integral Stops  Bubble Level

 Slip Fit Connection

Citi Round Diverting Tub Spout & 4" Shower Trim Kit

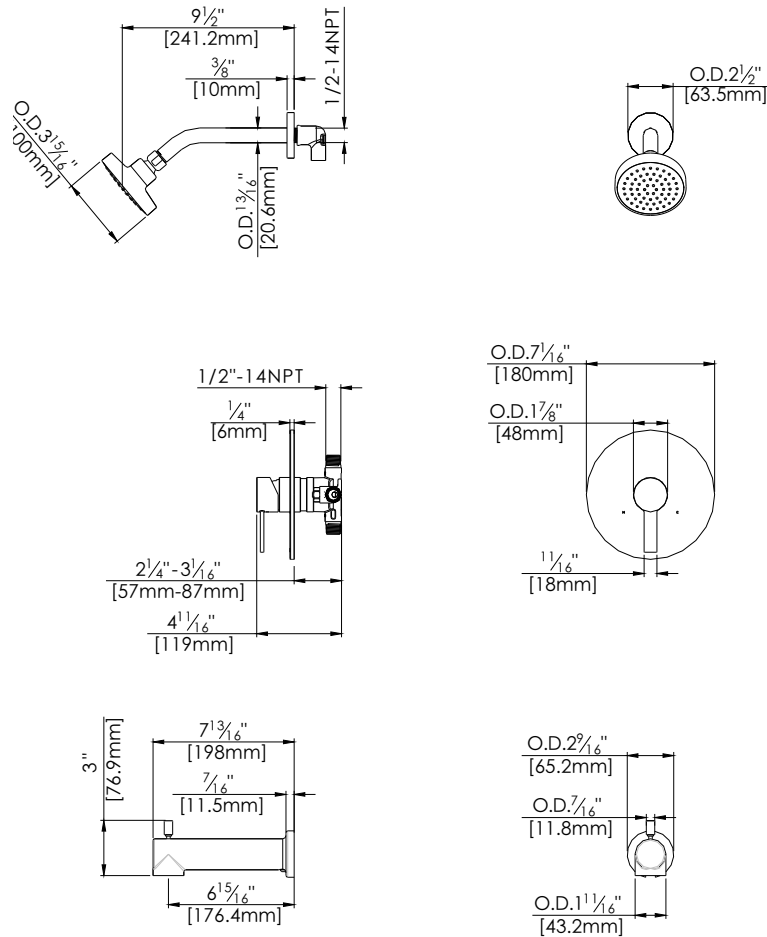
F241052T



Polished Chrome (CP) , Brushed Nickel (BN) & Matte Black (MB)

Technical Drawing

F241052T



Warranty:

Limited Lifetime Faucet Warranty against material and manufacturing defects for residential use.

2 Year Limited Warranty on all industrial, commercial and business applications.

Codes and Standards:

ANSI/ASME A112.18.1

CSA B125.1

IAPMO / cUPC Listed

Flow Rate:

Shower Head 1.8 gpm @ 60 psig

Tub Spout 4.5 gpm @ 60 psig

Low Flow Alternative: Shower Head @1.5 gpm: **F241052T-15**