

## Specifications:

- Metal construction for durability and reliability
- Pressure balancing volume control
- Max-temperature limit stop for added safety
- Integral stop check valves for easy maintenance
- Valve and trim packages are sold separately
- Requires the fluid F1001B or F1021B pressure balancing valve, (sold separately and available in solder, PEX and PEX-W.)

## Components:

F1001T .....	Sleeve Tube and Cap
FP6024041 .....	Blade Handle
FP6001035-1PB .....	Round Cover Plate
FP6098035L .....	7.5" Curved Tub Spout

## Citi 7.5" Curved Tub Spout Only Trim Kit

F241059T



## Features:

 Requires non-diverting F1001B or F1021B valve

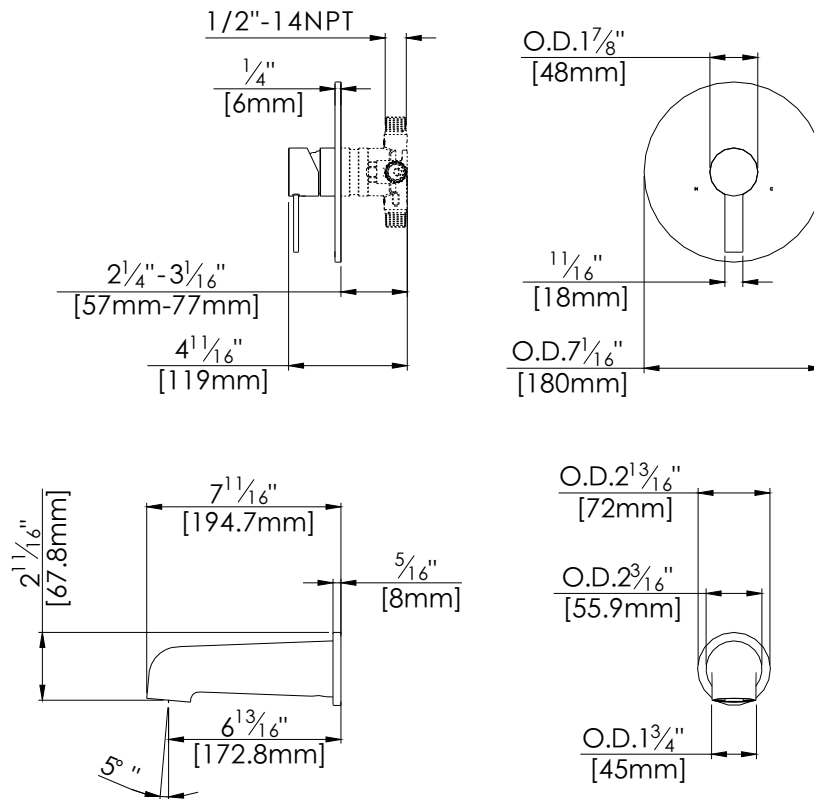
 Integral Stops  Bubble Level

 Slip Fit Connection

Polished Chrome (CP) , Brushed Nickel (BN) & Matte Black (MB)

## Technical Drawing

F241059T



### Warranty:

Limited Lifetime Faucet Warranty against material and manufacturing defects for residential use.

2 Year Limited Warranty on all industrial, commercial and business applications.

### Codes and Standards:

ANSI/ASME A112.18.1

CSA B125.1

IAPMO / cUPC Listed

### Flow Rate:

Tub Spout 4.5 gpm @ 60 psig