

## Citi Curved Tub Spout & 4" Shower Trim Kit (F1002B)

F244107T

### Specifications:


- Metal construction for durability and reliability
- Pressure balancing, single handle, 2-way diverting with temperature control
- Max-temperature limit stop for added safety
- Integral stop check valves for easy maintenance
- Valve and trim packages are sold separately
- Requires the fluid F1002B or F1042B pressure balancing valve, (sold separately and available in solder, PEX and PEX-W.)
- ADA Compliant

### Components:

F1001T .....	Sleeve Tube and Cap
FP6024041 .....	Blade Handle
FP6001035-2PS .....	Round Cover Plate
FP6098035L .....	7.5" Curved Tub Spout
FP6016008 .....	8" Shower Arm
FP10120 .....	4" Round Shower Head



### Features:

 Requires non-diverting F1002B or F1022B valve

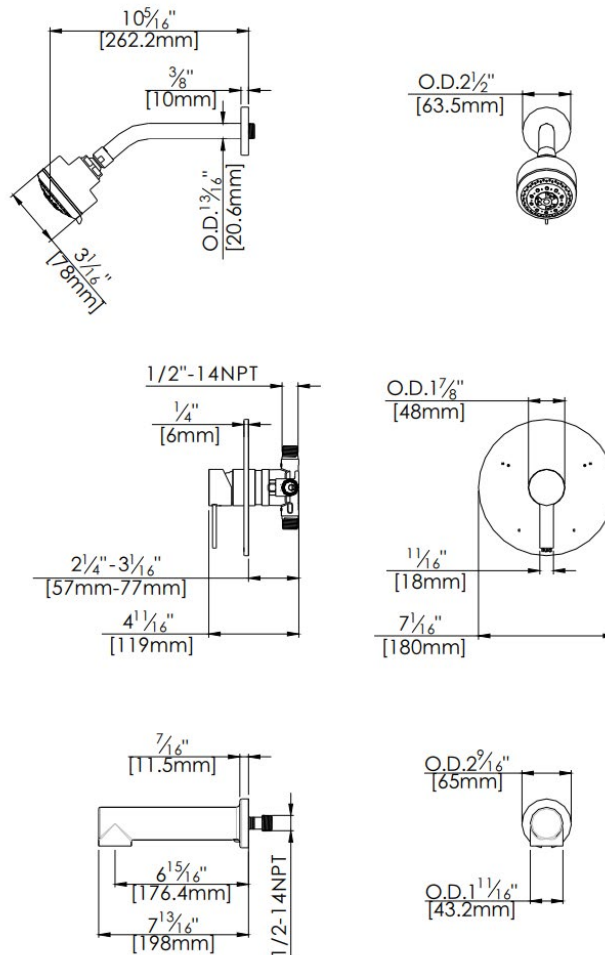
 Integral Stops  Bubble Level

 Slip Fit Connection

Polished Chrome (CP) , Brushed Nickel (BN) & Matte Black (MB)

## Technical Drawing

F244107T



### Warranty:

Limited Lifetime Faucet Warranty against material and manufacturing defects for residential use.

2 Year Limited Warranty on all industrial, commercial and business applications.

### Codes and Standards:

ANSI/ASME A112.18.1

CSA B125.1

IAPMO / cUPC Listed

### Flow Rate:

Shower Head 1.8 gpm @ 60 psig

Tub Spout 4.5 gpm @ 60 psig

Low Flow Alternative: Shower Head @ 1.5 gpm: **F244107-15**