

Citi Tub & 6" Shower Trim Kit (Single Handle)

F244102T

Specifications:


- Metal construction for durability and reliability
- Pressure balancing with 2-way, single handle diverting and temperature control
- Maximum temperature limit stop for added safety
- Integral stop check valves for easy maintenance
- Requires the fluid F1002B or F1042B pressure balancing valve, (sold separately and available in solder, PEX and PEX-W.)
- ADA compliant


Components:



F1001T	Cartridge Sleeve
FP6024041	Blade Handle
FP6001035-2PS	Round Cover Plate
FP6016008	8" Shower Arm
FP6000350	6" Shower Head
FP6055035	Round Tub Spout



Features:

 Requires non-diverting F1002B or F1042B valve

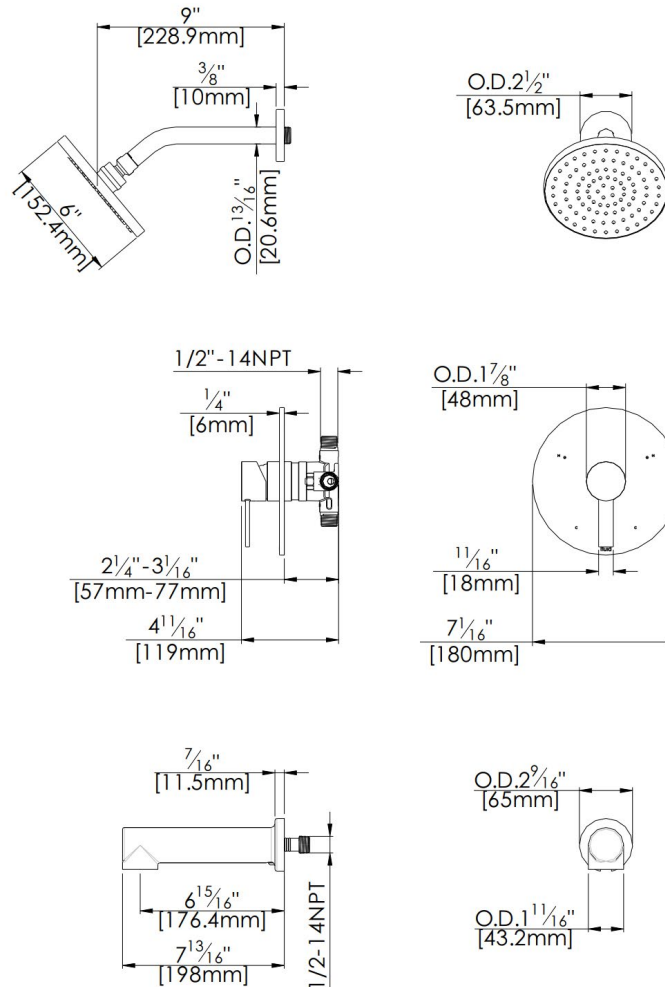
 Integral Stops  Bubble Level

 Slip Fit Spout  ADA

Polished Chrome (CP), Brushed Nickel (BN) and Matte Black (MB)

Technical Drawing

F244102T



Codes and Standards: ANSI/ASME A112.18.1, CSA B125.1, IAPMO /cUPC Listed

Warranty:

Limited Lifetime Faucet Warranty against material and manufacturing defects for residential use.

2 Year Limited Warranty on all industrial, commercial and business applications.

Kit Variations:

Kit with square style cover plate & diverter handle: [F244102T-S](#)

Flow Rate:

Shower Head 1.8 gpm @ 60 psig

Tub Spout 4.5 gpm @ 60 psig

Low Flow Alternative: Shower Head @ 1.5 gpm: [F244102T-15](#)