

## Specifications:

- ➔ Metal construction for durability and reliability
- ➔ Pressure balancing volume control with 2-way two handle diverting
- ➔ Maximum temperature limit stop for added safety
- ➔ Integral stop check valves for easy maintenance
- ➔ ADA compliant when alternate handle below is selected
- ➔ Requires the fluid F1012B or F1022B pressure balancing valve, (sold separately and available with shut off or \*\*sharing in solder, PEX and PEX-W.)

## Components:

F1001T .....	Cartridge Sleeve
FP6024041 .....	Blade Handle
FP801013 .....	Diverter Sleeve
FP605652 .....	Diverter Handle
FP6001142-2PB .....	Cover Plate
FP6016008 .....	8" Shower Arm
FP10200 .....	4" Eco Shower Head
FP6001048 .....	Round Hand Shower
FA105 .....	Slide Bar
FP6002047 .....	Wall Outlet
FP6001006 .....	60" Shower Hose

\*\*sharing available where allowed by code

Kit with Alternate Handle: **F242012T-AR**



Requires 2-Way diverting F1012B or F1022B valve



Bubble Level



Speed Connect



Integral Stops

## Citi 4" Eco Shower Head & Hand Shower Trim Kit

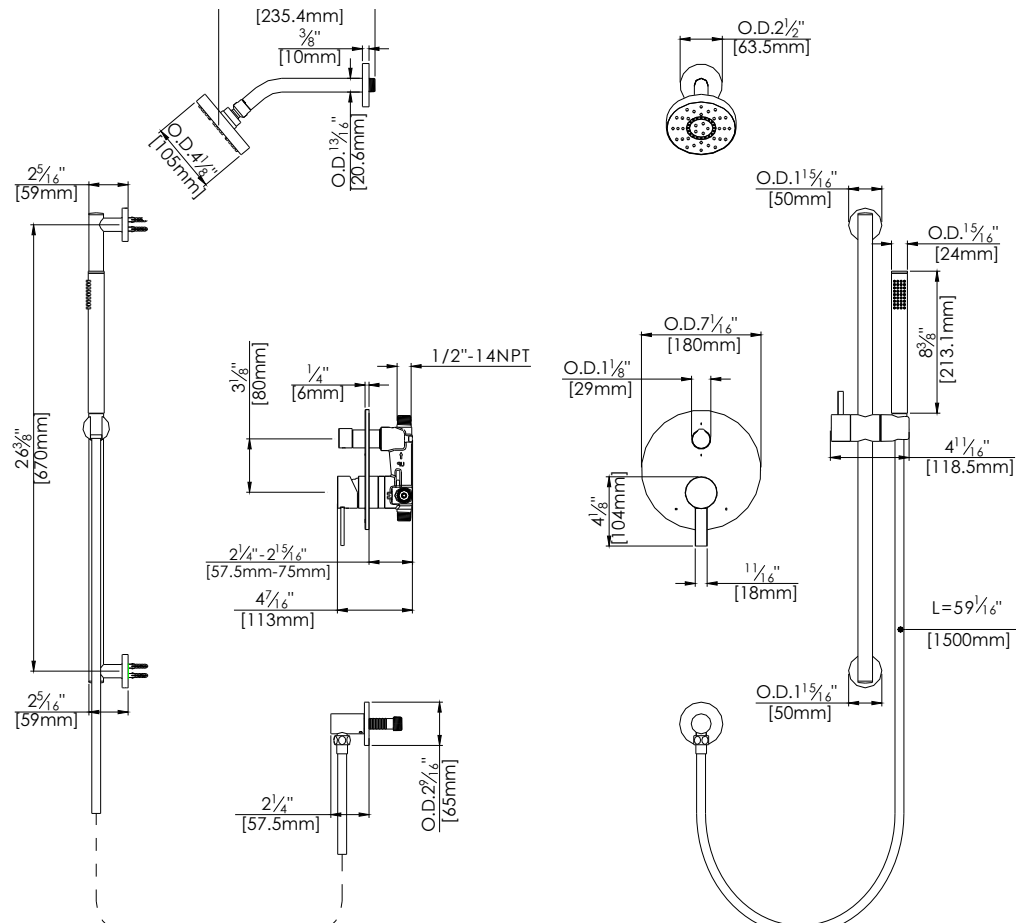
F242012T



Available in Polished Chrome (CP) only

## Technical Drawing

F242012T



**Codes and Standards:** ANSI/ASME A112.18.1, CSA B125.1, IAPMO / cUPC Listed

### Warranty:

Limited Lifetime Faucet Warranty against material and manufacturing defects for residential use.

2 Year Limited Warranty on all industrial, commercial and business applications.

### Kit Variations:

Kit with ADA diverter handle:

**F242012T-AR**

Kit with square style cover plate & diverter handle: **F242012T-S**

### Flow Rate:

Shower Head 1.5 gpm @ 60 psig

Hand Shower 1.8 gpm @ 60 psig

Low Flow Alternative: Hand Shower @ 1.5 gpm: **F242012T-15**