

## Specifications:

- Metal construction for durability and reliability
- Pressure balancing volume control
- Maximum temperature limit stop for added safety
- Integral stop check valves for easy maintenance
- Requires the fluid F1001B or F1021B pressure balancing valve, (sold separately and available in solder, PEX and PEX-W.)
- ADA compliant

## Components:

F1001T .....	Cartridge Sleeve
FP6024041 .....	Blade Handle
FP6001033-1PB .....	Square Cover Plate
FP6007108 .....	16" Rain Shower Arm
FP6001150 .....	8" Rain Shower Head

## Citi 8" Square Rain Shower Only Trim Kit

F241098T-ABS



## Features:

 Requires non-diverting F1001B or F1021B valve

 Integral Stops

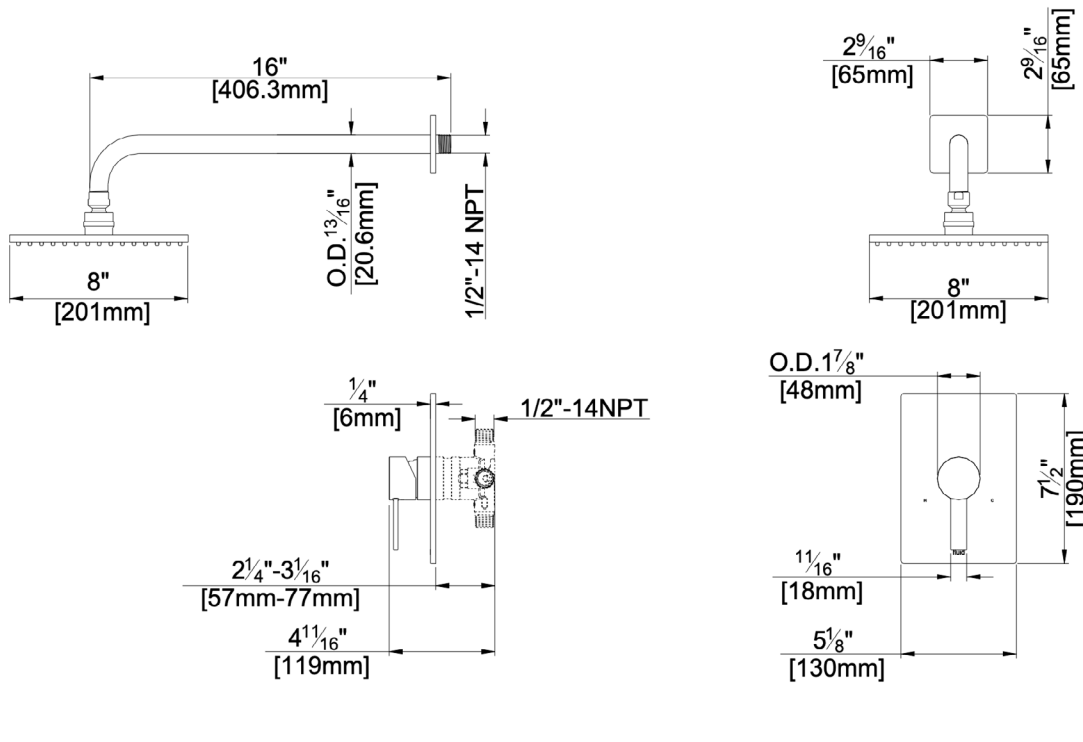
 Bubble Level

 ADA

Polished Chrome (CP), Brushed Nickel (BN) & Matte Black (MB)

## Technical Drawing

## F241098T-ABS



**Codes and Standards:** ANSI/ASME A112.18.1, CSA B125.1, IAPMO / cUPC Listed, EPA Watersense Listed

### Warranty:

Limited Lifetime Faucet Warranty against material and manufacturing defects for residential use.

2 Year Limited Warranty on all industrial, commercial and business applications.

### Kit Variations:

Kit with round style cover plate & diverter handle: [F241098T-ABS-R](#)

### Flow Rate:

Shower Head 1.8 gpm @ 60 psig

F241098T-ABS February 2025

fluid by [Sustainable Solutions](#)

Email: [help@sustainablesolutions.com](mailto:help@sustainablesolutions.com)

Toll free: 1-800-460-7019