

Specifications:

- ➔ Metal construction for durability and reliability
- ➔ Pressure balancing volume control with 2-way, two handle diverting
- ➔ Maximum temperature limit stop for added safety
- ➔ Integral stop check valves for easy maintenance
- ➔ ADA compliant when alternate handle below is selected
- ➔ Requires the fluid F1012B or F1022B pressure balancing valve, (sold separately and available with shut off or **sharing in Solder, PEX and PEX-W.)

Components:

F1001T	Cartridge Sleeve
FP6024041	Blade Handle
FP801013	Diverter Sleeve
FP605652	Diverter Handle
FP6001142-2PB	Round Cover Plate
FP40120	3 Function Hand Shower*
FA802	Slide Bar with Integral Outlet
FP6001006	60" Shower Hose*
FP6057034	Pipe Tub Spout


**sharing available where allowed by code

* Matte black features the FP6001007MB Shower Hose & FP40130MB 3-Function Hand Shower


Features:

 Requires non-diverting F1001B or F1021B valve

 Integral Stops

 Bubble Level

 ADA

 Speed Connect

Citi Tub & Hand Shower Trim Kit with FA802 Slide Bar

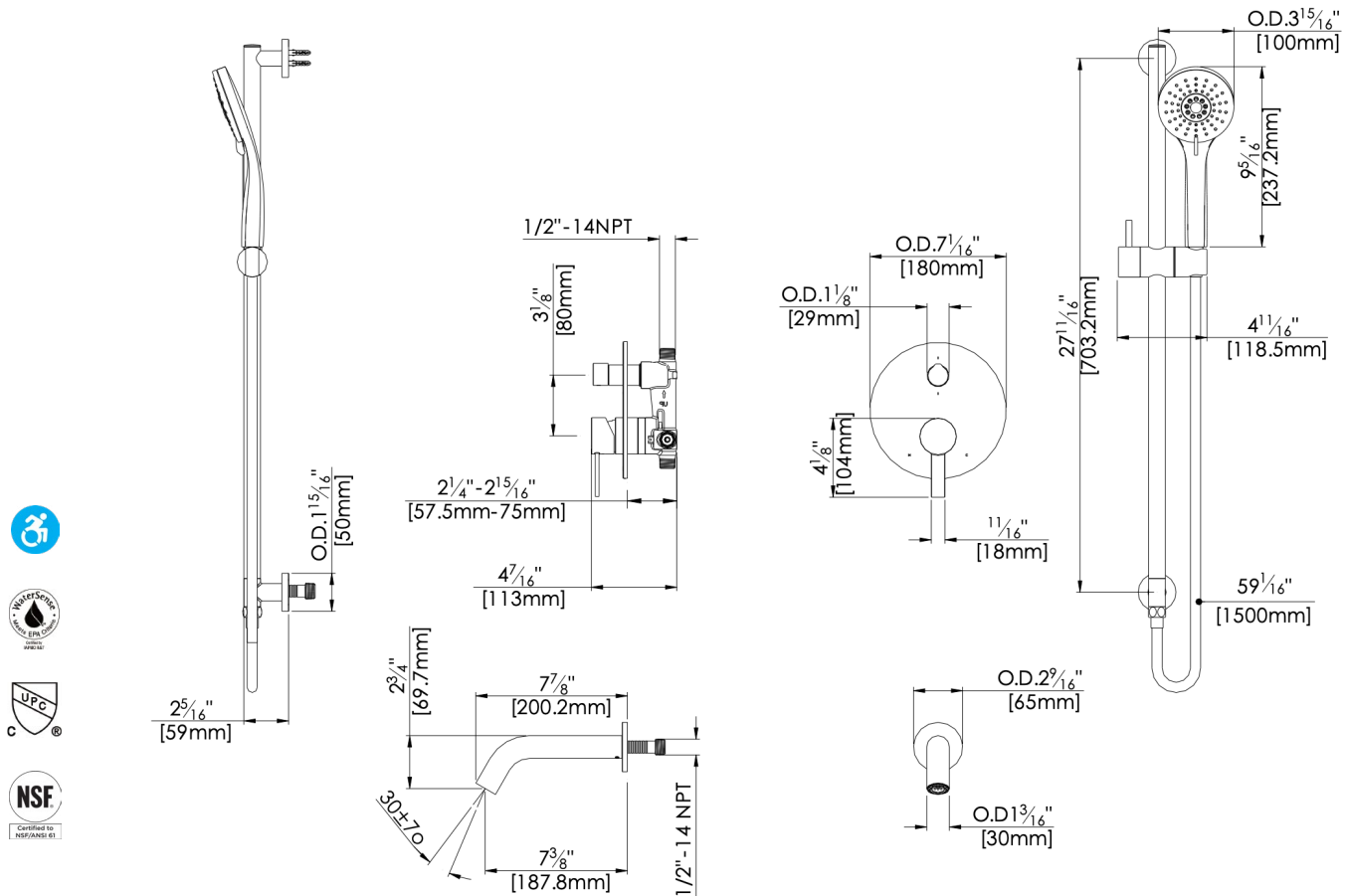
F242074T



Polished Chrome (CP), Brushed Nickel (BN) and Matte Black (MB)

Technical Drawing

F242074T



Codes and Standards: ANSI/ASME A112.18.1, CSA B125.1, IAPMO / cUPC Listed, EPA Watersense Listed, (excluding MB version).

Warranty:

Limited Lifetime Faucet Warranty against material and manufacturing defects for residential use.

2 Year Limited Warranty on all industrial, commercial and business applications.

Kit Variations:

Kit with ADA diverter handle:

F242074T-AR

Kit with square style cover plate & diverter handle: **F242074T-S**

Flow Rate:

Shower Head 1.8 gpm @ 60 psig

Tub Spout 4.5 gpm @ 60 psig

Low Flow Alternative: Shower Head @ 1.5 gpm: **F242074T-15**